

STANDARDS BOARD

Berne, 20 October 2003

Report on progress of testing M30-M37; Update of M37c

(Agenda item 3a)

Document by IPC

1 Subject	References/Paragraphs
This report summarises the work done on the specifications of M31, M33b, M34b, M36b and M37 and proposes a further update of M37c to allow publication of information relating to the use of EVTRPT as a replacement for EMSEVT messages.	§§4 to 21
2 Decisions expected The Standards Board is requested to note this progress report and grant status 0 approval for the update of M37c in annex 1 of this document, resulting in the publication of M37c-3.	§23

I. Background

1 As part of the ongoing effort to upgrade UPU message specifications to allow support for the use of ISO/IEC 15459 licence plates, standards M30-M37 were granted status 0 approval by the SB at its January 2003 meeting.

2 Based on work conducted by IPC and other participants in the test programme, the July 2003 meeting approved modifications to M31, M33b, M34b, M36b and all three parts of M37.

3 Since that time, work has continued on verification, completion and testing of the specifications of these messages.

II. Update of M37c to M37c-3

4 M37c is intended to contain an informative annex describing the use of the EVTRPT message as a replacement for the different tracking messages which it is supposed, in due course, to supersede. The current version of the specification contains only a rudimentary framework for this annex, with limited information about the replacement of EMSEVT and RESDIT.

5 Bearing in mind the anticipated initial use of EVTRPT within the EPG system, which presently uses EMSEVT for tracking purposes, the focus of attention on completion of the annex has so far concentrated on EMSEVT. The EXG considers that the work on this part of the annex has now reached a stage at which it would be appropriate to publish an update.

/ 6 Annex 1 of this document contains the text of the proposed update. This annex completes the intended content of section A.1 and adds provision for all remaining intended sections.

7 Since the main body of M37c would not be affected by the modification, Annex 1 contains only:

- the marked text changes of the revised Foreword to the standard. This has been modified to delete reference to M25, withdrawn in July 2003, and to update the text describing changes to the previous version;
- the text of the proposed revised version of Annex A of the standard. This text will, subject to Standards Board approval, replace the complete text of the current Annex A.

8 The content of the annex has, with the exception of A.3, been almost entirely re-written. It is therefore proposed that, for publication, the whole annex be marked as having changed. The more detailed change marks included in the attached text circulated for Standards Board approval represent changes between draft A of the document, as reviewed by the EXG, and draft B, which includes modifications resulting from comments by EXG members. They are provided primarily for the benefit of EXG members and others who may have reviewed the earlier draft of the document and will be removed before publication.

III. Progress on completion of the specifications

a *EMSEVT to EVTRPT conversion*

9 Related to the above, considerable work has been done on the generation of examples of the conversion of EMSEVT messages to EVTRPT messages. To support this work, IPC has developed a Perl programme to process sample EMSEVT messages and render them into EVTRPT format. This has been used to convert both the examples in the proposed revision of Annex A (which were extracted from M17) and two files of real EMSEVT messages extracted from those received by the IPC system.

10 The detailed results were circulated to the EXG¹ show that:

- automated conversion from EMSEVT to EVTRPT is feasible;
- in the absence of optimisation of the sequence of information in the messages (which is not supported the conversion programme), EVTRPT messages occupy 52% more space than their EMSEVT equivalent (5.07 Mb vs 3.34 Mb for the examples used). If the data are compressed, the overhead is reduced to 36% (1.02 vs 0.75 Mb).

11 Consideration is being given to the inclusion of some of the converted examples in M37c Annex B; to publication of the Perl conversion programme and to the development and publication of a reverse converter (from EVTRPT to EMSEVT). However, the work in this area is not yet at a stage at which the results can be incorporated in an update to the specification.

¹ Interested parties may consult the results on [www.upu.int: What we do/Standards/Meeting documents/SB Project Team 1 "Electronic Exchange" \(EXG\) Meeting of September 2003 \(CEP GAN EP 1 2003.3\) doc 8a.](http://www.upu.int/What%20we%20do/Standards/Meeting%20documents/SB%20Project%20Team%201%20Electronic%20Exchange%20(EXG)%20Meeting%20of%20September%202003%20(CEP%20GAN%20EP%201%202003.3)%20doc%208a.) (http://www.upu.int/document/2003/an/cep_gan_ep_1-3/d008a.pdf)

b TRAKIT to EVTRPT conversion

12 In parallel with the above, the UPU PTC has been working on examples of the conversion of TRAKIT messages to EVTRPT. Here also, a conversion programme was developed and used to convert a large number of messages (4789 messages, occupying 5.26 Mb). In this case, the conversion programme used attempts to re-sequence the information in the converted messages in order to take advantage of EVTRPT attribute inheritance rules. The results, shared with the EXG² show that:

- automated conversion from TRAKIT to EVTRPT is feasible;
- with optimisation of the sequence of information in the messages EVTRPT messages occupy 1% less space than their TRAKIT equivalent; if times are reported to a precision of 10 minutes, rather than 1 minute, the size of the EVTRPT messages can be reduced by a further 5%.

13 The PTC report² includes a total of 10 suggested ways in which EVTRPT might be modified to reduce message size and suggests that these could result in size reductions amounting to the order of 33%. However, some of these suggestions would result in the message ceasing to be fully EDIFACT compliant at the segment level and might entrain difficulties for some EDIFACT converters. The EXG has therefore agreed that the proposal should be investigated more thoroughly before being either accepted and put forward as proposals for the modification of M37 or rejected.

14 There have also been suggestions, arising out of both IPC and PTC work, that the current attribute inheritance rules in M37b and M37c may result in difficulties in situations in which one segment specifies the values of multiple attributes. For example, if an event for which attribute 'event.sub-location' is filled is followed by another event for which 'event.sub-location' is not known, the current inheritance rules require either that a new GRU+EVT group is started (destroying all other inherited attribute values and thereby adding to the message length) or that 'event.sub-location' is specified as being empty. However, this attribute is the last one contained within a LOC segment and, if it is empty, the separators preceding it will be removed – i.e. there is no way to distinguish between the case in which it is desired to communicate an empty value (indicating that no inheritance should take place) and the case in which the attribute is omitted (indicating that inheritance should take place).

15 To resolve this, it has been suggested that inheritance should operate at the complete segment + qualifier level. That is, omission of a segment would imply that all attributes conveyed by that segment should be inherited; presence of a segment that none of the attributes which could be contained within it are inherited. Again, this proposal will be investigated more thoroughly before being either accepted and put forward as a proposal for the modification of M37, or rejected.

16 The PTC work is intended to lead to the drafting of substantive content for M37c Annex A, section 2; to the creation of examples to be included in Annex B and, possibly, to a publishable form of the conversion programmes. However, the work has not yet progressed to the point at which it may be proposed for publication.

c EVTRPT as replacement for RESDES, RESCON and RESDIT

17 The PTC has also done some work on the evaluation of EVTRPT as a replacement for the response messages RESDES, RESCON and RESDIT. This has led to the observation that

² Interested parties may consult the results on [www.upu.int: What we do/Standards/Meeting documents/SB Project Team 1 "Electronic Exchange" \(EXG\) Meeting of September 2003 \(CEP GAN EP 1 2003.3\) doc 5. http://www.upu.int/document/2003/an/cep_gan_ep_1-3/d005.pdf](http://www.upu.int/What%20we%20do/Standards/Meeting%20documents/SB%20Project%20Team%201%20Electronic%20Exchange%20(EXG)%20Meeting%20of%20September%202003%20(CEP%20GAN%20EP%201%202003.3)%20doc%205.%20http://www.upu.int/document/2003/an/cep_gan_ep_1-3/d005.pdf)

transport information plays a major role in these messages and that it is not necessarily self-evident how this information should be conveyed using EVTRPT. In due course, this may lead to a proposal to modify M37 to accommodate transport data in a more transparent fashion.

d PREDES V3.0 as replacement for earlier versions of PREDES

18 IPC has continued to work on the generation of examples of the conversion of PREDES Versions 1.1 and 2.0 to PREDES V3.0 and on the parallel verification of M36b Annex A.1. The interim results of this work may be consulted on www.upu.int: What we do/Standards/Meeting documents/SB Project Team 1 "Electronic Exchange" (EXG) Meeting of September 2003 (CEP GAN EP 1 2003.3) doc 8c. It has yet to result in concrete proposals for modification of M36b Annexes A.1 and B.

IV. Other verification and testing work

19 The original plans for the verification and testing of the new standards were based on the expectation of substantial cooperative contributions from Finland Post and Sweden Post. Unfortunately, ongoing reorganisations have affected this work and it is no longer clear whether or when the anticipated contributions can be made.

20 Notwithstanding this, both organisations have contributed to the resolution of a suggestion that the new message specifications may breach EDIFACT segment collision rules. Technically, this would appear to be the case although not unlike some of the older specifications. However, both Finland Post and Sweden Post have confirmed that this is not expected to represent problems for their EDIFACT converters. The EXG therefore agreed that, subject to final review by Royal Mail to ensure that their converter can also handle them, there is currently no requirement to modify the specifications.

21 The uncertainty regarding Finland and Sweden Posts' participation in the test programme has, to some degree, been resolved by more rapid progress on other fronts. In particular:

- Deutsche Post has announced firm plans for the implementation of PREDES V3.0 and EVTRPT in the context of the EPG system. They expect to be ready to commence operational tests, with other partners (notably IPC and PNL) by mid-2004;
- IPC has also initiated implementation work by preparing both the translation tables for PREDES V3.0 and EVTRPT and by developing Perl conversion programmes which can be used as the basis for test message generators. This work demonstrates both the capability of IPC's EDIFACT converter (Amtrix) to support the specifications of the two messages concerned and the feasibility of converting from PREDES V2.0 and EMSEVT to PREDES V3.0, respectively EVTRPT;
- The PTC has initiated a review of the ITMATT specification, resulting in two suggestions for its improvement yet to be fully evaluated by the EXG.

22 As a result of the above, one issue has been identified with standard M30, which effectively calls for modification of the way in which EDIFACT interchanges are addressed. It is believed that the implementation of the current specification would result in unnecessary costs and inconvenience for the posts and may cause problems for network operators. Though this requires further investigation, IPC has been asked by the EXG to propose a modification to M30 that would allow it to support both existing interchange addressing mechanisms and the mechanism defined in the current version of the specification. After review by the EXG, it is intended that this be proposed, to the 2004-1 meeting of the SB, as an update of M30.

V. Decisions requested of the Standards Board

23 The Standards Board is requested to:

- Note the progress being made on the completion, verification and testing of the specifications;
- Grant status 0 approval for the revision of M37c, resulting in M37c-3, by replacement of Annex A and the Foreword of the standard by the content of Annex 1 of this document.

Foreword

Postal services form part of the daily life of people all over the world. The Universal Postal Union (UPU) is the specialized institution of the United Nations that regulates the universal postal service. The postal services of its 189 member countries form the largest physical distribution network in the world. Some 6.2 million postal employees working in over 700 000 post offices all over the world handle an annual total of 430 billion letters, printed matter and parcels in the domestic service and almost 10 billion letters, printed matter and parcels in the international service. Keeping pace with the changing communications market, posts are increasingly using new communication and information technologies to move beyond what is traditionally regarded as their core postal business. They are meeting higher customer expectations with an expanded range of products and value-added services.

Standards are important prerequisites for effective postal operations and for interconnecting the global network. The UPU's Standards Board develops and maintains a growing number of standards to improve the exchange of postal-related information between posts, and promotes the compatibility of UPU and international postal initiatives. It works closely with posts, customers, suppliers and other partners, including various international organizations. The Standards Board ensures that coherent standards are developed in areas such as electronic data interchange (EDI), mail encoding, postal forms and meters.

UPU standards are drafted in accordance with the rules given in Part V of the "General information on UPU standards" **Error! Reference source not found.** and are published by the UPU International Bureau in accordance with Part VII of that publication.

This document forms part C of a multi-part UPU standard, M37: *Postal processing events and event reporting*. It should be read, and may only be modified, in conjunction with the main body of the standard, part A, which defines the concept of postal processing events, identifies the different types of event that may occur, specifies their intrinsic characteristics or attributes, documents the relationships between events and other defined entities and specifies how event information is encoded for electronic communications purposes.

This part of the standard defines the first version, EVTRPT V1.0, of an EDIFACT message that supports such communications. This is designed to meet the business needs covered by four earlier reporting messages, EMSEVT, EXCEPT, RESDIT and TRAKIT, together with additional needs related to the tracking of transport units identified using licence plates, receptacle asset numbers and UPU standard S9 aggregate (receptacle) identifiers.

After testing and approval as a status 1 (draft) UPU standard, it is intended that EVTRPT V1.0 supersede and replace all previous EMSEVT, EXCEPT, RESCON, RESDES, RESDIT and TRAKIT versions:

- EMSEVT V0 (M16);
- EMSEVT V1 (M17);
- EXCEPT V1 (M21);
- RESCON V1.1 (M12);
- RESDES V1.1 (M13);
- RESDIT V1 (M22);
- TRAKIT V2.0 (M19).

This is the third version of the specification. Changes to the previous version, M37c-2 are highlighted by change marks. The main changes are:

- deletion of reference to M25, which has been withdrawn;
- completion of the part of Annex A which deals with the use of EVTRPT as a replacement for EMSEVT;

- provision, within Annex A, for further sections dealing with the use of EVTRPT as a replacement for other types of tracking message which are expected, in due course, to be superseded by EVTRPT (though the content of these sections remains to be completed).

Annex A (informative)

EDIFACT Message Usage Scenarios

A.1 International EMS¹ tracking and tracing - EVTRPT as a replacement for EMSEVT

<<before publication, change marks to be removed and replaced by a change bar extending across the whole annex>>This section is primarily concerned with the correspondence between EVTRPT V1.0 and EMSEVT V1.0 messages, which are specified in UPU standard M17. Differences from the earlier EMSEVT V0 messages, specified in M16, and the EMSEVT V0.1 messages used in the EPG system are discussed in sections A.1.8 and A.1.9 respectively.

A.1.1 International item tracking and tracing system overview

An individually tracked international postal item is subject to a number of events in its transportation from the point of posting to the final delivery point. Certain of these events are recorded and fed into a local computer system. The information gathered is known as "tracking details" for that item. The tracking data is made available to relevant parties through a worldwide data communications network.

The exchange of tracking information may take place in a variety of ways, in particular through the exchange of EMSEVT messages in accordance with UPU standard M16 or M17; the exchange of TRAKIT messages in accordance with UPU standard M15 or M19 or the exchange of EVTRPT messages in accordance with this standard. Whichever method is used, the exchange of information enables the origin post (see below) to trace the location of the item and to provide its customers with fast and detailed information about its delivery. It also provides the basis for information about the quality of service performance of the postal handling organisations involved in handling the item.

NOTE: Such quality of service information may be used in the assessment of terminal dues where these are based on pay-for-performance rules. However, this annex deals only with messaging aspects and, in particular, with the emulation of EMSEVT reporting procedures using EVTRPT messages. Using such emulation, it should be readily possible to adapt pay-for-performance monitoring systems to the use of EVTRPT, but this is not directly addressed herein.

A.1.2 Involvement of different postal handling organizations

The processing of an international postal item involves at least two and possibly more postal handling organizations:

Origin post: the mail service contractor.

Delivery post: the postal administration, or other postal handling organization, responsible for delivery of the item in the destination country.

NOTE: For exported items, i.e. items en route from the mailer to the addressee, the destination country is the country of the addressee. For returned items, i.e. items being returned to sender, the return addressee is the sender of the item and the delivery post is the same as the origin post.

Returning post: the postal administration, or other postal handling organization, that, under appropriate circumstances (e.g. addressee deceased), took the decision to return the item to its sender.

Transit post: any other postal handling organization, involved in the routing of the item between the origin post and the delivery post or, for returned items, between the returning post and the delivery post. Multiple transit posts may be involved: first transit post, second transit post, ..., last transit post.

¹ This annex is based on the structure and examples given in section 1.4 of UPU standards M16-4 and M17-4, which it is intended to supersede. Like those standards, it refers to EMS items but is, in fact, applicable to any type of item which carries an individual item identifier and may be tracked using EMSEVT messages. In particular, it applies to PRIME and EPG items.

NOTE: An administration can be or can become a transit administration in several cases:

- *Open transit: if the despatching postal handling organization (origin post of returning post as appropriate) does not make direct despatches to the delivery post, it will despatch the item via a third postal handling organization with which both have agreements. This third postal handling organization is a (planned) transit post. Given the planned nature of the operation, it should be pre-advised, by the despatching post that the item has been despatched to it.*
- *Misrouting: if an item is mis-sorted during the despatching process it may be received by a postal handling organization that should not normally have been involved in its processing. This organization will operate as a transit administration for the item. In this case, the transit was not planned, so the transit post will not have been pre-advised that the item has been despatched to it*
- *Addressee moved to another country: if an item is addressed to someone who has in fact moved to another country, it will initially be sent to a postal handling organization responsible for delivery to the original delivery address on the item. When the postal handling organization concerned finds that it cannot deliver the item, but must forward it to a new address for which a different postal handling organization has delivery responsibility, it will further act as a transit administration for the item.*

A.1.3 Tracking events reported; correspondence between EMSEVT and EVTRPT event-codes

To support efficient operations and to enable the origin and delivery posts to provide tracking and tracing services to their customers, the postal handling organizations involved in the processing of individually tracked items record and exchange information on key events which occur to each item as it passes through the postal system.

For items tracked with the aid of EMSEVT messages, 11 such events, ranging from posting/collection to final delivery, have been defined. As shown in the following table, these can be divided into three groups, according to which of the involved postal handling organizations is responsible for detection and reporting of them:

EMSEVT Event	EVTRPT Event ²	Usage notes
Events reported by the origin post		
A posting/collection	XP (10) posting	
	PP (10) acceptance for processing	May be used as an alternative to the 'posting' event.
B arrival at outward IMPC	XE (9) postal facility entry	
C departure from outward IMPC	XD (9) postal facility despatch	A second event report with event.code TS (transport departure) is required if it is desired to communicate the (scheduled) transport date.
Events reported by the delivery post		
D arrival at inward IMPC	XE (11) postal facility entry	
E held by customs	VE (22) customs entry	
F departure from inward IMPC	XD (11) postal facility despatch	Different products use EMF in different ways. The choice of EVTRPT event is therefore product dependent. XD is used if the report relates to despatch from the inward IMPC; VC should be used if it relates to the completion of customs processing, allowing the 'delivery-timer' to continue counting.
	VC (22) customs clearance	
G arrival at delivery office	XE (83) postal facility entry	

² Entries give the value of event.code and, in brackets, the value of event.location-function. Note that some values of event.location-function refer to postal facilities that are registered as international mail processing centres (IMPCs); others refer to facilities that are part of the domestic processing network in the country concerned.

EMSEVT Event	EVTRPT Event ²	Usage notes
H unsuccessful delivery	RA (83) delivery attempt	RA is used if further delivery attempts are to be made, or if the item is to be returned or forwarded; RF should be used if the item is seized or destroyed, i.e. if no further event reports are to be expected. VR may be used in case of delivery failure resulting from retention by customs.
	RF (83) delivery failure	
	VR (22) customs retention	
I final delivery	RC (83) delivery completion	
Events reported by the transit post, for items sent in open transit		
J arrival at transit IMPC	XE (13) postal facility entry	
K departure from transit IMPC	XD (13) postal facility despatch	

A.1.4 Addressing of tracking events

A.1.4.1 Normal items

The following table summarises normal event reporting for EMS items. Reporting arrangements for other products and services may differ.

From	To	EMSEVT events	Equivalent EVTRPT events
Origin post	Delivery post	A B C	XP (10) or PP (10) XE (9) XD (9)
Delivery post	Origin post	D E F G H I	XE (11) VE (22) XD (11) or VC (22) XE (83) RA (83) , RF (83) or VF (22) RC (83)

In addition, if transit via one or more other posts is involved, the following reports are required:

From	To	EMSEVT events	Equivalent EVTRPT events
Origin post	First transit post	C	XD (9)
Transit post (any)	Origin post	J K	XE (13) XD (13)
n th Transit post	previous Transit post	J	XE (13)
n th Transit post	next Transit post	K	XD (13)
Last Transit post	Delivery post	K	XD (13)
Delivery post	last Transit post	D	XE (11)

A.1.4.2 Returned items

For returned items, the origin and delivery posts are the same. Event reporting is as follows:

From	To	EMSEVT events	Equivalent EVTRPT events
------	----	---------------	--------------------------

From	To	EMSEVT events	Equivalent EVTRPT events
Returning post	Origin = Delivery post	C	XD (9)
Origin = Delivery post	Returning post	D	XE (11)
Returning post	First ³ transit post	C	XD (9)
Transit post (any)	Origin = Delivery post	J K	XE (13) XD (13)
n th Transit post	previous Transit post	J	XE (13)
n th Transit post	next Transit post	K	XD (13)
Origin = Delivery post	last Transit post	D	XE (11)

A.1.5 Business data element usage

The tables in the following sections list the business data elements in EMSEVT messages and show the equivalent data element(s) from EVTRPT messages. Where relevant, the final column of the tables provides explanatory notes.

Each section also provides an example of an EMSEVT segment and its equivalent in terms of an EVTRPT segment group. The latter includes all segments needed to represent the EMSEVT segment. It should be noted, however, that, in EVTRPT, data in an event report may usually be omitted if it is identical to the data from the previous event report in the same GRU+EVT' segment group.

A.1.5.1 Data elements that are common to all EMSEVT events

EMSEVT data flow element	EVTRPT data flow element	Usage notes
event type (segment name)	event-code	See above (A.1.3) for correspondence.
item-identification	entity-id	Expression in licence plate form is required. For S10-compliant identifiers, prefix J10A may be used.
	entity-type	Should be the item (lxx) entry, from UPU codelist 154, that corresponds with the mail subclass code (codelist 117) for the item concerned. <i>EXAMPLE: IEN – EMS mixed</i>
destination-country	locality.code or country.code in NAD (counterparty)	Party role (function) CN is used for the original delivery address; UC if the item is known to have been forwarded. <i>NOTE: Subject to any product-specific requirements, this data may alternatively be sent as item attributes data in an ITMATT, AGGATT of PREDES V3.0 message.</i>
event-date	latest-date	In UTC-like format, with absence of an offset indicating local time. See the UPU Standards Glossary entry for <i>date</i> for further details.
event-time	(included in latest date)	

EXAMPLE: EMB+EE349279408BECH9910051815+BEBRUA'

would be represented, using EVTRPT, as:

GRU+EVT'

[start of new event report group; resets defaults]⁴

³ That is, the first transit post on the return path. Note that the return path may involve different transit arrangements than the forward path.

LIN+1++J10AEE349279408BE+IEN' [1st report, on EMS mixed⁵ with S10 identifier EE349279408BE]
 STS+A+XE' [actual report; postal facility entry]
 LOC+9+BEBRUA' [in outward IMPC BEBRUA – see A.1.5.3 for details]
 DTM+472:199910051815' [at or before 1815 local time on 5 October 1999]
 NAD+CN+++++CH' [delivery address in Switzerland⁶]

A.1.5.2 EMA – posting/collection event data elements

EMSEVT data flow element	EVTRPT data flow element	Usage notes
office-of-origin	location	For coding rules, see UPU codelist 139 and Location Code in UPU standard S25.
	location-function	10 (origin point - see UPU codelist 155).
customer's-account	party.identifier in NAD (counterparty)	Party role should be: CZ if the data relates to the submitter;
sender's-postcode	locality.code or postcode in NAD (counterparty)	N1 if it relates to the party to whom the item is to be returned in case of non-delivery; OY if it relates to the item originator;
place-of-origin	locality.name in NAD (counterparty)	PR if it relates to the payer <i>NOTE: Subject to product-specific requirements, these data may alternatively be communicated as item attributes in and ITMATT, AGGATT or PREDES V3.0 message.</i>
addressee's-zipcode	locality.code or postcode in NAD (counterparty)	Party role (function) CN is used for the original delivery address; UC if the item is known to have been forwarded.
place-of-destination	locality.code or .name in NAD (counterparty)	<i>NOTE: Subject to product-specific requirements, these data may alternatively be communicated as item attributes in and ITMATT, AGGATT or PREDES V3.0 message.</i>

EXAMPLE: EMA+EE349279408BECHE9910051130+++1200+BRUS+102072+BASEL'

would be represented, using EVTRPT, as:

GRU+EVT' [start of new event report group; resets defaults]
 LIN+1++J10AEE349279408BE+IEN' [1st report, on EMS mixed with S10 identifier EE349279408BE]
 STS+A+XP' [actual report; posting]
 LOC+10+BE' [posting location in Belgium⁷]
 DTM+472:199910051130' [at or before 1130 local time on 5 October 1999]
 NAD+OY+++++BRUS++1200' [originator from 1200 Brus(sels)]
 NAD+CN+++++BASEL+CH-102072' [delivery address in Swiss postcode area 102072⁸ in Basel]

⁴ The GRU+EVT segment is shown for completeness. It would normally only occur in the first event report of each related group of reports.

⁵ Since it is not known whether the item is merchandise or a document, entity type EN (EMS mixed) is used here. Strictly, the entity type should be IEM for EMS merchandise or IED for an EMS document.

⁶ Note the optional use of data element 3229. Since a country code is involved here, the value could have been put in data element 3207. This would require two additional + (plus) signs.

⁷ The EMA segment does not actually specify the office of origin, so country of origin is the best that can be given. It would also be possible to give the sender's postcode (BE-1200 in this case). It would be preferable to explicitly specify posting location if it were known.

⁸ Note that the value 102072 does not correspond with a valid Swiss postcode, but is used here for consistency with the example given in EMSEVT documentation. Also note the use of CH- followed by a postcode. This is optional, the postcode and country code could instead have been put in data elements 3251 and 3207.

A.1.5.3 EMB – arrival at outward IMPC event data elements

EMSEVT data flow element	EVTRPT data flow element	Usage notes
outward-IMPC	location	For coding rules, see UPU codelist 139 and Location Code in UPU standard S25.
	location-function	9: outbound IMPC - See UPU codelist 155.

EXAMPLE: *EMB+EE349279408BECH9910051815+BEBRUA'*

would be represented, using EVTRPT, as:

GRU+EVT' [start of new event report group; resets defaults]
 LIN+1++J10AEE349279408BE+IEN' [1st report, on EMS mixed with S10 identifier EE349279408BE]
 STS+A+XE' [actual report; postal facility entry]
 LOC+9+BEBRUA' [in outward IMPC BEBRUA]
 DTM+472:199910051815' [at or before 1815 local time on 5 October 1999]
 NAD+CN+++++CH' [delivery address in Switzerland]

A.1.5.4 EMC – departure from outward IMPC event data elements

EMSEVT data flow element	EVTRPT data flow element	Usage notes
outward-IMPC	location	For coding rules, see UPU codelist 139 and Location Code in UPU standard S25.
	location-function	9 (outward IMPC) - See UPU codelist 155.
despatch-number	cross-reference	Use complete despatch identifier ⁹
	cross-reference-type	AAK (despatch)
despatch-address	secondary-or-sub-location	For coding rules, see UPU codelist 139 and Location Code in UPU standard S25.
flight-number	associated-entity	
	associated-entity-type	T (conveyance)
flight-date (see NOTE 1)	latest-date	In UTC-like format, with absence of an offset indicating local time. See the UPU Standards Glossary entry for <i>date</i> for further details.
	event-status	Normally S (scheduled) – see codelist 145.
	event-code	TS (transport departure)

NOTE 1: The flight date in an EMC event is not strictly information about the event of leaving the outward IMPC, but is a forecast of when the transportation of the item is to commence. Hence, using EVTRPT, it is reported as part of a separate transport departure event. Since this is unlikely to have yet occurred, it is reported with status S (scheduled) rather than with status A (actual). See event.status in M37a for details.

EXAMPLE: *EMC+EE349279408BECH9910052300+BEBRUA+274+CHBSLA+SN432+991006'*

would be represented, using EVTRPT, as:

GRU+EVT' [start of new event report group; resets defaults]
 LIN+1++J10AEE349279408BE+IEN' [1st report, on EMS mixed with S10 identifier EE349279408BE]
 STS+A+XD' [actual report; postal facility despatch]
 LOC+9+BEBRUA++CHBSLA' [in outward IMPC BEBRUA; secondary (to) location CHBSLA]
 DTM+472:199910052300' [at or before 2300 local time on 5 October 1999]
 NAD+CN+++++CH' [delivery address in Switzerland]
 RFF+AAK:BEBRUACHBSLAAEN90274' [full despatch id, rather than only the number]
 LIN+2' [2nd report, on same entity, from same location]
 STS+S+TS' [scheduled event; transport departure]
 PIA+1+SN432:T' [associate with conveyance (T) SN432]
 DTM+472:19991006' [on or before 6 October 1999]

⁹ The EMSEVT segments themselves do not provide sufficient information to complete this and, in the examples used, the despatch identifier is therefore "created" from the IMPC codes and despatch number by assuming that the mail category is A (airmail), the mail sub-class is EN (EMS mixed) and the despatch year is the same as the year taken from the date of the event.

NOTE 2: In the above example, the flight number has been put in the second (transport departure) event report, because it is associated with the transport departure date. If no date were given, it could be included in the first (postal facility despatch) report.

A.1.5.5 EMD – arrival at inward IMPC event data elements

EMSEVT data flow element	EVTRPT data flow element	Usage notes
receiving-IMPC	location	For coding rules, see UPU codelist 139 and Location Code in UPU standard S25.
	location-function	11 (inward IMPC) - See UPU codelist 155.
despatching-IMPC	secondary-or-sub-location	
received-despatch	cross-reference	Use complete despatch identifier
	cross-reference-type	AAK (despatch)

EXAMPLE: EMD+EE349279408BECH9910060616+CHBSLA+BEBRUA+248'

would be represented, using EVTRPT, as:

GRU+EVT' [start of new event report group; resets defaults]
 LIN+1++J10AEE349279408BE+IEN' [1st report, on EMS mixed with S10 identifier EE349279408BE]
 STS+A+XE' [actual report; postal facility arrival]
 LOC+11+CHBSLA++BEBRUA' [in inward IMPC CHBSLA; secondary (from) location BEBRUA]
 DTM+472:199910060616' [at or before 0616 local time on 6 October 1999]
 NAD+CN+++++CH' [delivery address in Switzerland]
 RFF+AAK:BEBRUACHBSLAAEN90248' [full despatch id, rather than only the number]

A.1.5.6 EME - held by customs event data elements

EMSEVT data flow element	EVTRPT data flow element	Usage notes
receiving-IMPC	location	For coding rules, see UPU codelist 139 and Location Code in UPU standard S25.
	location-function	22 (inbound customs - See UPU codelist 155).
retention-code	Reason	Use codelist 135 entry corresponding to the item customs retention code (codelist 111). NOTE: Many codelist 135 entries are derived by adding a prefix (1, 2, or 9) in front of the codelist 111 value, but it is not guaranteed that this will continue to apply to new code values.

EXAMPLE: EME+EE349279408BECH9910060730+CHBSLA+50'

would be represented, using EVTRPT, as:

GRU+EVT' [start of new event report group; resets defaults]
 LIN+1++J10AEE349279408BE+IEN' [1st report, on EMS mixed with S10 identifier EE349279408BE]
 STS+A+VE+250' [actual report; customs entry; reason: invoice missing]
 LOC+22+CHBSLA' [in inbound customs CHBSLA]
 DTM+472:199910060730' [at or before 0730 local time on 6 October 1999]
 NAD+CN+++++CH' [delivery address in Switzerland]

A.1.5.7 EMF – departure from inward IMPC event data elements

EMSEVT data flow element	EVTRPT data flow element	Usage notes
receiving-IMPC	location	For coding rules, see UPU codelist 139 and Location Code in UPU standard S25.
	location-function	11 (inward IMPC) - See UPU codelist 155.
dutiable-indicator	entity-status	3DUT is the code value for dutiable – see codelist 148.

EXAMPLE: EMF+EE349279408BECH9910061000+CHBSLA+D'

would be represented, using EVTRPT, as:

GRU+EVT' [start of new event report group; resets defaults]
 LIN+1++J10AEE349279408BE+IEN' [1st report, on EMS mixed with S10 identifier EE349279408BE]

STS+A+XD'	[actual report; postal facility despatch]
RSL+1++3DUT'	[entity status is dutiable]
LOC+11+CHBSLA'	[from inward IMPC CHBSLA]
DTM+472:199910061000'	[at or before 1000 local time on 6 October 1999]
NAD+CN+++++CH'	[delivery address in Switzerland]

NOTE: The above example assumes that the EMF event is used to record departure from the inward IMPC, which corresponds to EVTRPT event.code XD. Some products (e.g. EPG) actually use EMF to record the end of customs processing, which more properly corresponds with event.code VC. In this case, the equivalent EVTRPT representation would be:

GRU+EVT'	[start of new event report group; resets defaults]
LIN+1++J10AEE349279408BE+IEN'	[1 st report, on EMS mixed with S10 identifier EE349279408BE]
STS+A+VC'	[actual report; customs clearance]
RSL+1++3DUT'	[entity status is dutiable]
LOC+11+CHBSLA'	[in inward IMPC CHBSLA]
DTM+472:199910061000'	[at or before 1000 local time on 6 October 1999]
NAD+CN+++++CH'	[delivery address in Switzerland]

A.1.5.8 EMG – arrival at delivery office event data elements

EMSEVT data flow element	EVTRPT data flow element	Usage notes
delivery-office	location	For coding rules, see UPU codelist 139 and Location Code in UPU standard S25.
	location-function	83 (delivery office - See UPU codelist 155).

EXAMPLE: EMG+EE349279408BECH9910061545+102072'

would be represented, using EVTRPT, as:

GRU+EVT'	[start of new event report group; resets defaults]
LIN+1++J10AEE349279408BE+IEN'	[1 st report, on EMS mixed with S10 identifier EE349279408BE]
STS+A+XE'	[actual report; postal facility entry]
LOC+83+CHA102072'	[at delivery office with Swiss Post allocated code 102072]
DTM+472:199910061545'	[at or before 1545 local time on 6 October 1999]
NAD+CN+++++CH'	[delivery address in Switzerland]

A.1.5.9 EMH – unsuccessful delivery attempt event data elements

EMSEVT data flow element	EVTRPT data flow element	Usage notes													
delivery-office	location	For coding rules, see UPU codelist 139 and Location Code in UPU standard S25.													
	location-function	83 (delivery office - See UPU codelist 155).													
unsuccessful-delivery-code	Reason	Use codelist 135 entry corresponding to the item non-delivery reason code (codelist 112). NOTE 1: Many codelist 135 entries are derived by adding a prefix (1, 2, or 9) in front of the codelist 112 value, but it is not guaranteed that this will continue to apply to new code values. NOTE 2: Some non-delivery reason codes (e.g. 27 - lost) corresponds with end-events and should be reported using event code RF (delivery failure), rather than with event code RA (delivery attempt).													
	entity-status	Entity-status is derived from non-delivery action (the first character of unsuccessful-delivery-code) as follows: <table> <thead> <tr> <th>Non-del action</th> <th>entity-status</th> </tr> </thead> <tbody> <tr> <td>A</td> <td>3ADR</td> </tr> <tr> <td>B</td> <td>3ABD</td> </tr> <tr> <td>C</td> <td>3AAA</td> </tr> <tr> <td>D</td> <td>3AMA</td> </tr> <tr> <td>E</td> <td>3ARS</td> </tr> <tr> <td>F</td> <td>3AFW</td> </tr> </tbody> </table>	Non-del action	entity-status	A	3ADR	B	3ABD	C	3AAA	D	3AMA	E	3ARS	F
Non-del action	entity-status														
A	3ADR														
B	3ABD														
C	3AAA														
D	3AMA														
E	3ARS														
F	3AFW														

EMSEVT data flow element	EVTRPT data flow element	Usage notes
		G 3ACC H 3RET I 3AOA J 3AAC NOTE: Since non-delivery action H (seized or destroyed) corresponds with an end-event, it should be reported using event code RF (delivery failure), rather than with event code RA (delivery attempt). Event code VR (customs retention) would be used if the item had been retained by customs.

EXAMPLE 1: EMH+EE349279408BECH9910070830+102072+A10'

would be represented, using EVTRPT, as:

GRU+EVT' [start of new event report group; resets defaults]
 LIN+1++J10AEE349279408BE+IEN' [1st report, on EMS mixed with S10 identifier EE349279408BE]
 STS+A+RA+110' [actual report; delivery attempt – unsuccessful due to incorrect address]
 RSL+1++3ADR' [entity status awaiting next delivery round]
 LOC+83+CHA102072' [at delivery office with Swiss Post allocated code 102072]
 DTM+472:199910070830' [at or before 0830 local time on 7 October 1999]
 NAD+CN+++++CH' [delivery address in Switzerland]

EXAMPLE 2: EMH+EE349279408BECH9910070830+102072+H18'

would be represented, using EVTRPT, as:

GRU+EVT' [start of new event report group; resets defaults]
 LIN+1++J10AEE349279408BE+IEN' [1st report, on EMS mixed with S10 identifier EE349279408BE]
 STS+A+RF+118' [actual report; delivery failure – damaged]
 RSL+1++3DST' [entity status destroyed or irretrievably damaged]
 LOC+83+CHA102072' [at delivery office with Swiss Post allocated code 102072]
 DTM+472:199910070830' [at or before 0830 local time on 7 October 1999]
 NAD+CN+++++CH' [delivery address in Switzerland]

EXAMPLE 3: EMH+EE349279408BECH9910070830+102072+H19'

would be represented, using EVTRPT, as:

GRU+EVT' [start of new event report group; resets defaults]
 LIN+1++J10AEE349279408BE+IEN' [1st report, on EMS mixed with S10 identifier EE349279408BE]
 STS+A+VR+119' [actual report; customs retention – prohibited article]
 RSL+1++3RET' [entity status retained by customs or other competent authorities]
 LOC+83+CHA102072' [at delivery office with Swiss Post allocated code 102072]
 DTM+472:199910070830' [at or before 0830 local time on 7 October 1999]
 NAD+CN+++++CH' [delivery address in Switzerland]

A.1.5.10 EMI – final delivery event data elements

EMSEVT data flow element	EVTRPT data flow element	Usage notes
delivery-office	location	For coding rules, see UPU codelist 139 and Location Code in UPU standard S25.
	location-function	83 (delivery office - See UPU codelist 155).
name-recipient	counterparty	See codelist 153 (Party role). The value should be: CN if the data relates to the addressee; CX if delivery has been to an agent of the addressee; UC if the item is known to have been forwarded.

EXAMPLE: EMI+EE349279408USMA9910090820+MAHADARHEIRA'

would be represented, using EVTRPT, as:

GRU+EVT' [start of new event report group; resets defaults]
 LIN+1++J10AEE349279408US+IEN' [1st report, on EMS mixed with S10 identifier EE349279408US]
 STS+A+RC' [actual report; delivery completion]

LOC+83+MAAMAHADA'
DTM+472:199910090820'
NAD+CN+++RHEIRA+++MA'

[at delivery office with Moroccan Post allocated code MAHADA¹⁰]
[at or before 0820 local time on 9 October 1999]
[delivery to Rheira at address in Morocco]

A.1.5.11 EMJ – arrival at transit IMPC event data elements

EMSEVT data flow element	EVTRPT data flow element	Usage notes
transit-IMPC	location	For coding rules, see UPU codelist 139 and Location Code in UPU standard S25.
	location-function	13 (transit IMPC - See UPU codelist 155).
despatching-IMPC	secondary-or-sub-location	For coding rules, see UPU codelist 139 and Location Code in UPU standard S25.
received-despatch	cross-reference	Use full despatch identifier
	cross-reference-type	AAK (despatch)

EXAMPLE: EMJ+EE349279408USMA9910070800+BEBRUA+USJFKA+274'

would be represented, using EVTRPT, as:

GRU+EVT' [start of new event report group; resets defaults]
LIN+1++J10AEE349279408US+IEN' [1st report, on EMS mixed with S10 identifier EE349279408US]
STS+A+XE' [actual report; arrival at postal facility]
LOC+13+BEBRUA++USJFKA' [at IMPC BEBRUA; secondary (from) location USJFKA]
DTM+472:199910070800' [at or before 0800 local time on 7 October 1999]
NAD+CN+++++MA' [delivery address in Morocco]
RFF+AAK:USJFKABEBRUAAEN90274' [full despatch id, rather than only the number]

A.1.5.12 EMK – departure from transit IMPC event data elements

EMSEVT data flow element	EVTRPT data flow element	Usage notes
transit-IMPC	location	For coding rules, see UPU codelist 139 and Location Code in UPU standard S25.
	location-function	13 (transit IMPC - See UPU codelist 155).
transit-despatch-number	cross-reference	
	cross-reference-type	(despatch)
transit-despatch-address	secondary-or-sub-location	For coding rules, see UPU codelist 139 and Location Code in UPU standard S25.
flight-number	associated-entity	
	associated-entity-type	T (conveyance)
flight-date ¹¹	latest-date	In UTC-like format, with absence of an offset indicating local time. See the UPU Standards Glossary entry for <i>date</i> for further details.
	event-status	Normally S (scheduled) – see codelist 145.
	event-code	TS (transport departure)

EXAMPLE: EMK+EE349279408USMA9910071525+BEBRUA+212+MACASA+SN839+991007'

would be represented, using EVTRPT, as:

GRU+EVT' [start of new event report group; resets defaults]
LIN+1++J10AEE349279408US+IEN' [1st report, on EMS mixed with S10 identifier EE349279408US]
STS+A+XD' [actual report; departure from postal facility]
LOC+13+BEBRUA++MACASA' [from transit IMPC BEBRUA; secondary (to) location MACASA]
DTM+472:199910071525' [at or before 1525 local time on 7 October 1999]
NAD+CN+++++MA' [delivery address in Morocco]

¹⁰ MAHADA structurally resembles an IMPC code, but is not in the UPU code list. Also, MAHAD is not a valid UN/Locode, so the value has been treated as a Moroccan Post-allocated code value.

¹¹ Requires a second event report, with status STS+S+TS (scheduled transport departure).

RFF+AAK:BEBRUAMACASAAEN90212' [full despatch id, rather than only the number]
LIN+2' [2nd report, on same entity, from same location]
STS+S+TS' [scheduled event; transport departure]
PIA+1+SN839:T' [associate with conveyance (T) SN839]
DTM+472:19991007' [on or before 7 October 1999]

A.1.6 Complete message example

The following table provides a complete example of the conversion, to EVTRPT, of the EMSEVT message used as example in section 2.5 of UPU standard M17-4.

EMSEVT	EVTRPT equivalent
UNB+UNOA:1+CH001+BE001+970130:0948+000000803' UNH+00000080300001+EMSEVT:2:0:IP:EMS'	UNB+UNOA:2+J1CCHA:58:CH001+J1CBEA:58:BE001+970130:0948+000000803' UNH+00000080300001+EVTRPT:100:00A:AD' BGM++J1CCHACH0011997013009480080300001+9'GRU+EVT'
EMC+EE410155025CHBE9701300710+CHBSLA+2+BEBRUA+LX800+970130'	LIN+1++J10AEE410155025CH:IEN' STS+A+XD' LOC+9+CHBSLA++BEBRUA' DTM+472:199701300710' NAD+CN++++++BE' RFF+AAK:CHBSLABEBRUAEN70002' LIN+2' STS+S+TS' PIA+1+LX800:T' DTM+472:19970130'
EMC+EE406037526CHBE9701300735+CHZRHA+68+BEBRUA+SR9352+970130'	LIN+3++J10AEE406037526CH' STS+A+XD' LOC+9+CHZRHA++BEBRUA' DTM+472:199701300735' RFF+AAK:CHZRHABEBRUAEN70068' LIN+4' STS+S+TS' PIA+1+SR9352:T' DTM+472:19970130'
EMC+EE403802143CHBE9701300735+CHZRHA+68+BEBRUA+SR9352+970130'	LIN+5++J10AEE403802143CH' STS+A+XD' DTM+472:199701300735' LIN+6' STS+S+TS' DTM+472:19970130'
EMC+EE401275461CHBE9701300735+CHZRHA+68+BEBRUA+SR9352+970130'	LIN+7++J10AEE401275461CH' STS+A+XD' DTM+472:199701300735' LIN+8' STS+S+TS' DTM+472:19970130'
EMC+EE401524067CHBE9701300735+CHZRHA+68+BEBRUA+SR9352+970130'	LIN+9++J10AEE401524067CH' STS+A+XD' DTM+472:199701300735' LIN+10' STS+S+TS' DTM+472:19970130'
EMC+EE411401323CHBE9701300735+CHZRHA+68+BEBRUA+SR9352+970130'	LIN+11++J10AEE411401323CH' STS+A+XD' DTM+472:199701300735' LIN+12'

EMSEVT	EVTRPT equivalent
EMC+EE401164275CHBE9701300735+CHZRHA+68+ BEBRUA+SR9352+970130'	STS+S+TS' DTM+472:19970130' LIN+13++J10AEE401164275CH'
EMC+EE403029891CHBE9701300735+CHZRHA+68+ BEBRUA+SR9352+970130'	STS+A+XD' DTM+472:199701300735' LIN+14' STS+S+TS' DTM+472:19970130' LIN+15++J10AEE403029891CH'
EMC+EE403802109CHBE9701300735+CHZRHA+68+ BEBRUA+SR9352+970130'	STS+A+XD' DTM+472:199701300735' LIN+16' STS+S+TS' DTM+472:19970130' LIN+17++J10AEE403802109CH'
EMC+EE401237295CHBE9701300735+CHZRHA+68+ BEBRUA+SR9352+970130'	STS+A+XD' DTM+472:199701300735' LIN+18' STS+S+TS' DTM+472:19970130' LIN+19++J10AEE401237295CH'
EMC+EE409080228CHBE9701300735+CHZRHA+68+ BEBRUA+SR9352+970130'	STS+A+XD' DTM+472:199701300735' LIN+20' STS+S+TS' DTM+472:19970130' LIN+21++J10AEE409080228CH'
EMC+EE406037543CHBE9701300735+CHZRHA+68+ BEBRUA+SR9352+970130'	STS+A+XD' DTM+472:199701300735' LIN+22' STS+S+TS' DTM+472:19970130' LIN+23++J10AEE406037543CH'
EMC+EE411342381CHBE9701300735+CHZRHA+68+ BEBRUA+SR9352+970130'	STS+A+XD' DTM+472:199701300735' LIN+24' STS+S+TS' DTM+472:19970130' LIN+25++J10AEE411342381CH'
EMC+EE409720884CHBE9701300735+CHZRHA+68+ BEBRUA+SR9352+970130'	STS+A+XD' DTM+472:199701300735' LIN+26' STS+S+TS' DTM+472:19970130' LIN+27++J10AEE409720884CH'
EMC+EE402121121CHBE9701300735+CHZRHA+68+ BEBRUA+SR9352+970130'	STS+A+XD' DTM+472:199701300735' LIN+28' STS+S+TS' DTM+472:19970130' LIN+29++J10AEE402121121CH'
	STS+A+XD' DTM+472:199701300735'

EMSEVT	EVTRPT equivalent
EMC+EE405257344CHBE9701300735+CHZRHA+56+ BEBRUA+SR9352+970130'	LIN+30' STS+S+TS' DTM+472:19970130' LIN+31++J10AEE405257344CH'
EMC+EE407835345CHBE9701300735+CHZRHA+56+ BEBRUA+SR9352+970130'	STS+A+XD' DTM+472:199701300735' RFF+AAK:CHZRHABEBRUAAEN70056' LIN+32' STS+S+TS' DTM+472:19970130' LIN+33++J10AEE407835345CH'
EMC+EE409131905CHBE9701300735+CHZRHA+56+ BEBRUA+SR9352+970130'	STS+A+XD' DTM+472:199701300735' LIN+34' STS+S+TS' DTM+472:19970130' LIN+35++J10AEE409131905CH'
EMC+EE400863608CHBE9701300735+CHZRHA+56+ BEBRUA+SR9352+970130'	STS+A+XD' DTM+472:199701300735' LIN+36' STS+S+TS' DTM+472:19970130' LIN+37++J10AEE400863608CH'
EMC+EE411064524CHBE9701300735+CHZRHA+56+ BEBRUA+SR9352+970130'	STS+A+XD' DTM+472:199701300735' LIN+38' STS+S+TS' DTM+472:19970130' LIN+39++J10AEE411064524CH'
EMC+EE407102212CHBE9701300730+CHGVAA+70+ BEBRUA+SN9370+970130'	STS+A+XD' DTM+472:199701300735' LIN+40' STS+S+TS' DTM+472:19970130' LIN+41++J10AEE407102212CH'
EMC+EE401063087CHBE9701300730+CHGVAA+70+ BEBRUA+SN9370+970130'	STS+A+XD' LOC+9+CHGVAA++BEBRUA' DTM+472:199701300730' RFF+AAK:CHGVAAEBRUAAEN70070' LIN+42' STS+S+TS' PIA+1+SN9370:T' DTM+472:19970130' LIN+43++J10AEE401063087CH'
EMC+EE401818066CHBE9701300730+CHGVAA+70+ BEBRUA+SN9370+970130'	STS+A+XD' DTM+472:199701300730' LIN+44' STS+S+TS' DTM+472:19970130' LIN+45++J10AEE401818066CH'
	STS+A+XD' DTM+472:199701300730' LIN+46' STS+S+TS'

EMSEVT	EVTRPT equivalent
EMC+EE404757627CHBE9701300735+CHZRHA+69+ BEBRUA+SR9352+970130'	DTM+472:19970130' LIN+47++J10AEE404757627CH' STS+A+XD' LOC+9+CHZRHA++BEBRUA' DTM+472:199701300735' RFF+AAK:CHZRHABEBRUAAEN70069' LIN+48' STS+S+TS' PIA+1+SR9352:T' DTM+472:19970130'
EMC+EE405689659CHBE9701300735+CHZRHA+69+ BEBRUA+SR9352+970130'	LIN+49++J10AEE405689659CH' STS+A+XD' DTM+472:199701300735' LIN+50' STS+S+TS' DTM+472:19970130'
EMC+EE405264495CHBE9701300735+CHZRHA+69+ BEBRUA+SR9352+970130'	LIN+51++J10AEE405264495CH' STS+A+XD' DTM+472:199701300735' LIN+52' STS+S+TS' DTM+472:19970130'
EMC+EE400883956CHBE9701300730+CHGVAA+40+ BEBRUA+SN9370+970130'	LIN+53++J10AEE400883956CH' STS+A+XD' LOC+9+CHGVAA++BEBRUA' DTM+472:199701300730' RFF+AAK:CHGVAABEBRUAAEN70040' LIN+54' STS+S+TS' PIA+1+SN9370:T' DTM+472:19970130'
EMC+EE407418659CHBE9701300730+CHGVAA+40+ BEBRUA+SN9370+970130'	LIN+55++J10AEE407418659CH' STS+A+XD' DTM+472:199701300730' LIN+56' STS+S+TS' DTM+472:19970130'
EMC+EE407197285CHBE9701300730+CHGVAA+40+ BEBRUA+SN9370+970130'	LIN+57++J10AEE407197285CH' STS+A+XD' DTM+472:199701300730' LIN+58' STS+S+TS' DTM+472:19970130'
EMC+EE401851699CHBE9701300730+CHGVAA+40+ BEBRUA+SN9370+970130'	LIN+59++J10AEE401851699CH' STS+A+XD' DTM+472:199701300730' LIN+60' STS+S+TS' DTM+472:19970130'
EMD+EE170924699BECH9701300910+CHGVAA+BE BRUA+28'	LIN+61++J10AEE170924699BE' STS+A+XE' PIA+1' LOC+11+CHGVAA++BEBRUA' DTM+472:199701300910'

EMSEVT	EVTRPT equivalent
EMD+EE168254955BECH9701300910+CHGVAA+BE BRUA+28'	NAD+CN+++++CH' RFF+AAK:BEBRUACHGVAAAEN70028' LIN+62++J10AEE168254955BE'
EMD+EE171116999BECH9701300911+CHGVAA+BE BRUA+28'	LIN+63++J10AEE171116999BE' DTM+472:199701300911' LIN+64++J10AEE170313224BE'
EMD+EE170313224BECH9701300911+CHGVAA+BE BRUA+28'	LIN+65++J10AEE169858272BE'
EMD+EE169858272BECH9701300911+CHGVAA+BE BRUA+28'	LIN+66++J10AEE169185222BE'
EMD+EE169185222BECH9701300911+CHGVAA+BE BRUA+28'	LIN+67++J10AEE132625938BE'
EMD+EE132625938BECH9701300911+CHGVAA+BE BRUA+28'	LIN+68++J10AEE174104924BE'
EMD+EE174104924BECH9701300911+CHGVAA+BE BRUA+28'	LIN+69++J10AEE166199443BE' DTM+472:199701300912' RFF+AAK:BEBRUACHGVAAAEN70029'
EMD+EE166199443BECH9701300912+CHGVAA+BE BRUA+29'	LIN+70++J10AEE165651825BE'
EMD+EE165651825BECH9701300912+CHGVAA+BE BRUA+29'	LIN+71++J10AEE171631762BE'
EMD+EE171631762BECH9701300912+CHGVAA+BE BRUA+29'	LIN+72++J10AEE134236374BE'
EMD+EE134236374BECH9701300913+CHGVAA+BE BRUA+29'	DTM+472:199701300913' LIN+73++J10AEE171631759BE'
EMD+EE171631759BECH9701300913+CHGVAA+BE BRUA+29'	LIN+74++J10AEE130229320BE'
EMD+EE130229320BECH9701300913+CHGVAA+BE BRUA+29'	LIN+75++J10AEE171497762BE' STS+A+RA+113' RSL+1++3ARS' LOC+83+CHA802200' DTM+472:199701280000' RFF+AAK'
EMH+EE171497762BECH9701280000+802200+E13'	LIN+76++J10AEE173454362BE' LOC+83+CHA120072' DTM+472:199701200000'
EMH+EE173454362BECH9701200000+120072+E13'	LIN+77++J10AEE003918772BE' STS+A+RA+118' LOC+83+CHA944200' DTM+472:199701280000'
EMH+EE003918772BECH9701280000+944200+E18'	LIN+78++J10AEE173998545BE' STS+A+RA+112' RSL+1++3ABD' LOC+83+CHA100072'
EMH+EE173998545BECH9701280000+100072+B12'	LIN+79++J10AEE008116693BE' STS+A+RA+110' RSL+1++3AAA' LOC+83+CHA254001'
EMH+EE008116693BECH9701280000+254001+C10'	LIN+80++J10AEE171631780BE' STS+A+RC' RSL+1' LOC+83+CHA402100' DTM+472:199701290000'
EMI+EE171631780BECH9701290000+402100'	LIN+81++J10AEE166482266BE' LOC+83+CHA860600' DTM+472:199701280000'
EMI+EE166482266BECH9701280000+860600'	LIN+82++J10AEE133665893BE'
EMI+EE133665893BECH9701280000+949100'	

EMSEVT	EVTRPT equivalent
EMI+EE175188996BECH9701270000+550400'	LOC+83+CHA949100' LIN+83++J10AEE175188996BE' LOC+83+CHA550400' DTM+472:199701270000'
EMI+EE171806177BECH9701270000+410400'	LIN+84++J10AEE171806177BE' LOC+83+CHA410400'
EMI+EE174907285BECH9701290000+120072'	LIN+85++J10AEE174907285BE' LOC+83+CHA120072' DTM+472:199701290000'
EMI+EE171163755BECH9701290000+100072'	LIN+86++J10AEE171163755BE' LOC+83+CHA100072'
EMI+EE172560767BECH9701290000+120072'	LIN+87++J10AEE172560767BE' LOC+83+CHA120072'
EMI+EE165587821BECH9701290000+100072'	LIN+88++J10AEE165587821BE' LOC+83+CHA100072'
EMI+EE165052234BECH9701290000+120072'	LIN+89++J10AEE165052234BE' LOC+83+CHA120072'
EMI+EE168055827BECH9701290000+100072'	LIN+90++J10AEE168055827BE' LOC+83+CHA100072'
EMI+EE166941965BECH9701290000+802072'	LIN+91++J10AEE166941965BE' LOC+83+CHA802072'
EMI+EE170917450BECH9701290000+560001'	LIN+92++J10AEE170917450BE' LOC+83+CHA560001'
EMI+EE133785410BECH9701280000+396126'	LIN+93++J10AEE133785410BE' LOC+83+CHA396126' DTM+472:199701280000'
EMI+EE167039403BECH9701280000+740300'	LIN+94++J10AEE167039403BE' LOC+83+CHA740300'
EMI+EE164451059BECH9701280000+815200'	LIN+95++J10AEE164451059BE' LOC+83+CHA815200'
EMI+EE166942047BECH9701200000+120072'	LIN+96++J10AEE166942047BE' LOC+83+CHA120072' DTM+472:199701200000'
EMI+EE167784308BECH9701210000+120072'	LIN+97++J10AEE167784308BE' DTM+472:199701210000'
EMI+EE170705818BECH9701270000+179200'	LIN+98++J10AEE170705818BE' LOC+83+CHA179200' DTM+472:199701270000'
EMI+EE168925735BECH9701270000+230050'	LIN+99++J10AEE168925735BE' LOC+83+CHA230050'
EMI+EE171370452BECH9701280000+698700'	LIN+100++J10AEE171370452BE' LOC+83+CHA698700' DTM+472:199701280000'
EMI+EE169031212BECH9701270000+564300'	LIN+101++J10AEE169031212BE' LOC+83+CHA564300' DTM+472:199701270000'
EMI+EE130275236BECH9701210000+120072'	LIN+102++J10AEE130275236BE' LOC+83+CHA120072' DTM+472:199701210000'
EMI+EE169870260BECH9701210000+120072'	LIN+103++J10AEE169870260BE'
EMI+EE134708992BECH9701210000+120072'	LIN+104++J10AEE134708992BE'
EMI+EE170248517BECH9701280000+393000'	LIN+105++J10AEE170248517BE' LOC+83+CHA393000' DTM+472:199701280000'
EMI+EE130856148BECH9701280000+121123'	LIN+106++J10AEE130856148BE' LOC+83+CHA121123'
EMI+EE132769755BECH9701280000+126001'	LIN+107++J10AEE132769755BE' LOC+83+CHA126001'
EMI+EE170858941BECH9701280000+300072'	LIN+108++J10AEE170858941BE' LOC+83+CHA300072'
EMI+EE172523795BECH9701280000+300072'	LIN+109++J10AEE172523795BE'
EMI+EE169009320BECH9701280000+126001'	LIN+110++J10AEE169009320BE'

EMSEVT	EVTRPT equivalent
EMI+EE168730178BECH9701280000+102000'	LOC+83+CHA126001' LIN+111++J10AEE168730178BE' LOC+83+CHA102000'
EMI+EE171631776BECH9701280000+396000'	LIN+112++J10AEE171631776BE' LOC+83+CHA396000'
UNT+84+00000080300001'	UNT+322+00000080300001'
UNZ+1+000000803'	UNZ+1+000000803'

A.1.7 Information exchange scenarios

The scenarios hereafter give information on when and where to send tracking reports on international EMS items.

NOTE 1: These scenarios correspond with those described in EMSEVT message specification, M17, but:

- make use of event descriptions rather than codes (since these differ between EMSEVT and EVTRPT);
- use more up-to-date terminology (e.g. IMPC in place of Office of Exchange);
- refer to posts, rather than countries.

NOTE 2: Reporting arrangements for products and services may differ from those for EMS.

A.1.7.1 Scenario 1 – Direct despatch with normal delivery on the second attempt

A.1.7.1.1 Description

An EMS item is collected by one post for delivery by another post in a different country; the origin post makes direct despatches to the delivery post. The delivery post successfully delivers the item to the addressee at the second attempt.

A.1.7.1.2 Event report interchange

As shown in the following figure:

- the origin post advises the delivery post of posting/collection, arrival at the outward IMPC and departure from the outward IMPC;
- the delivery post advises the origin post of arrival at the inward IMPC, passage through customs, departure from the inward IMPC, arrival at the delivery office and attempted and final delivery.

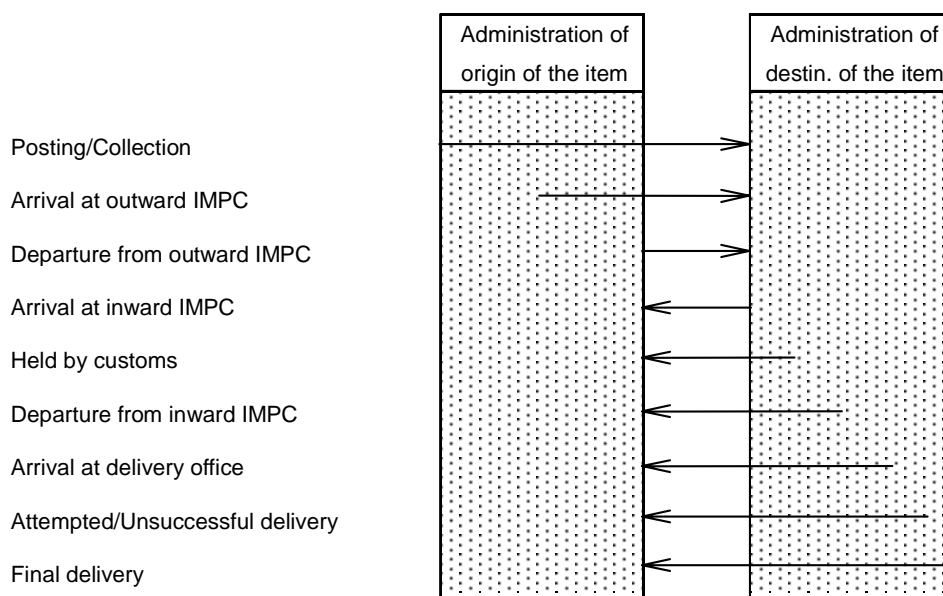


Figure 1 - Direct despatch with normal delivery on the second attempt

A.1.7.1.3 Example messages¹² for item EE349279408BE from Belgium to Switzerland

Belgian Post advises Swiss Post of posting/collection, arrival at the outward IMPC and departure from the outward IMPC.

EMSEVT V1.0	EVTRPT ¹³ V1.0
UNB+UNOA:1+BE001+CH001+991006:0430+101'	UNB+UNOA:2+J1CBEA:58:BE001+J1CCHA:58:CH001+991006:0430+101'
UNH+287+EMSEVT:2:0:IP:EMS'	UNH+287+EVTRPT:100:00A:AD'
EMA+EE349279408BECH9910051130+++1200+BRUS+102072+BASEL'	BGM++J1CBEABE0011999100604300000000287+9' GRU+EVT'
	LIN+1++J10AEE349279408BE:IEN' STS+A+XP' LOC+10+BE' DTM+472:199910051130' NAD+OY++++BRUS++1200' NAD+CN++++BASEL+CH-102072'
EMB+EE349279408BECH9910051815+BEBRUA'	LIN+2' STS+A+XE' LOC+9+BEBRUA' DTM+472:199910051815' NAD+OY' NAD+CN++++CH'
EMC+EE349279408BECH9910052300+BEBRUA+274+CHBSLA+SN432+991006'	LIN+3' STS+A+XD' LOC+9+BEBRUA++CHBSLA' DTM+472:199910052300' RFF+AAK:BEBRUACHBSLAAEN90274' LIN+4' STS+S+TS' PIA+1+SN432:T' DTM+472:19991006'
UNT+5+287'	UNT+25+287'
UNZ+1+101'	UNZ+1+101'

NOTE: In the NAD segments of the EVTRPT event corresponding to the EMSEVT EMA event above:

- the sender's postcode (1200) from the EMA is represented in NAD data element 3251 (postal identification code) as supplied in the EMA. It could have been associated with the correct country code (resulting in NAD+OY++++BRUS++1200+BE') or as an S25 location code in data element 3229 (resulting in NAD+OY++++BRUS+BE-1200'). This was not done because the automated conversion programme used does not assume that the sender's postcode is necessarily in the country from where the posting event is reported;
- the recipient's postcode is represented as a location code in data element 3229 because in this case it is known, from the delivery country information, that the postcode given is a Swiss one. The data could equally well have been reported as NAD+CN++++BASEL++102072+CH.'

Swiss Post advises Belgian Post of arrival at the inward IMPC, passage through customs, departure from the inward IMPC, arrival at the delivery office and attempted and final delivery.

¹² In this and the following examples, several events are reported in one interchange/message and there is only one item per interchange/message. In practice, this is unlikely to be the case: events are normally reported soon after their detection and, since there may be a significant elapsed time between two events for the same items, the reports of these are likely to be sent in different messages. Similarly, for performance and costs reasons, event report messages will normally provide information on more than one item.

¹³ EMSEVT messages give date/time using the local time zone of the reporting organization. EVTRPT gives the possibility to specify an offset, or to give date/time in UTC. However, on the assumption that this is not relevant (otherwise EMSEVT messages would be deficient), no use is made of this capability – hence the date/times given are also local in this and all following examples.

EMSEVT V1.0	EVTRPT
UNB+UNOA:1+CH001+BE001+991008:0030+102'	UNB+UNOA:2+J1CCHA:58:CH001+J1CBEA:58:BE001+991008:0030+102'
UNH+875+EMSEVT:2:0:IP:EMS'	UNH+875+EVTRPT:100:00A:AD'
EMD+EE349279408BECH9910060616+CHBSLA+BEB RUA+248'	BGM++J1CCHACH0011999100800300000000875+9' GRU+EVTV'
	LIN+1++J10AEE349279408BE:IEN'
	STS+A+XE'
	LOC+11+CHBSLA++BEBRUA'
	DTM+472:199910060616'
	NAD+CN+++++CH'
	RFF+AAK:BEBRUACHBSLAAEN90248'
EME+EE349279408BECH9910060730+CHBSLA+50'	LIN+2'
	STS+A+VE+250'
	LOC+22+CHBSLA'
	DTM+472:199910060730'
	RFF+AAK'
EMF+EE349279408BECH9910061000+CHBSLA+D'	LIN+3'
	STS+A+XD'
	RSL+1++3DUT'
	LOC+11+CHBSLA'
	DTM+472:199910061000'
EMG+EE349279408BECH9910061545+102072'	LIN+4'
	STS+A+XE'
	RSL+1'
	LOC+83+CHA102072'
	DTM+472:199910061545'
EMH+EE349279408BECH9910070830+102072+A10'	LIN+5'
	STS+A+RA+110'
	RSL+1++3ADR'
	DTM+472:199910070830'
EMI+EE349279408BECH9910071045+102072+JARA MILLO'	LIN+6'
	STS+A+RC'
	RSL+1'
	DTM+472:199910071045'
	NAD+CN+++JARAMILLO+++CH'
UNT+8+875'	UNT+34+875'
UNZ+1+102'	UNZ+1+102'

A.1.7.2 Scenario 2 – Despatch via a transit post, normal delivery on the second attempt

A.1.7.2.1 Description

An EMS item is collected by one post for delivery by another post in a different country; the origin post does not make direct despatches to the delivery post but routes the item in open transit via a transit administration.

The transit administration makes direct despatches to the delivery post. This successfully delivers the item to the addressee at the second attempt.

A.1.7.2.2 Event report interchange

As shown in the following figure:

- the origin post advises the delivery post of posting/collection and arrival at the outward IMPC;
- the origin post advises both the transit post and the delivery post of departure from the outward IMPC;
- the transit post advises the origin post of arrival at the transit IMPC;

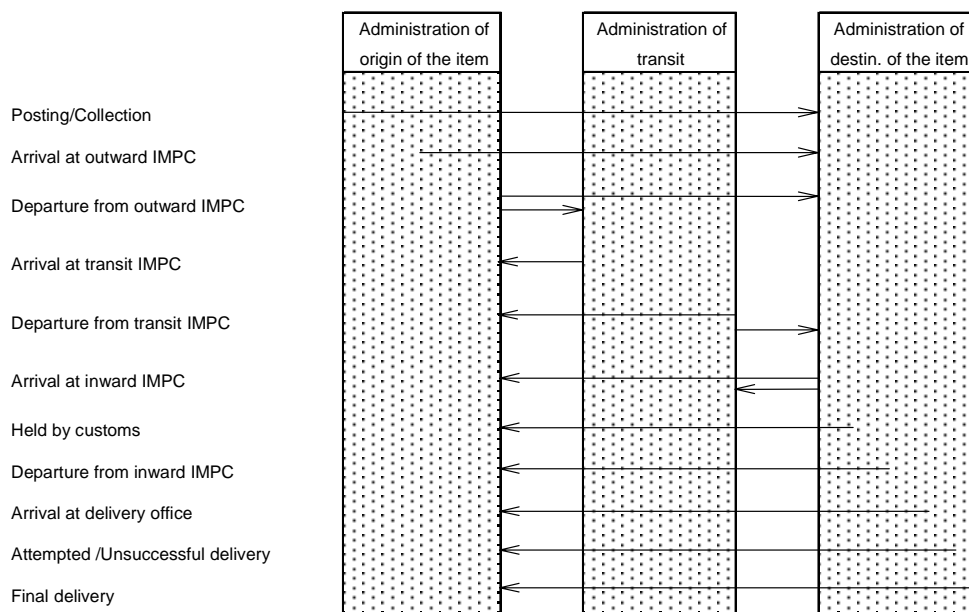


Figure 2 - Despatch via a transit post, normal delivery on the second attempt

- the transit post advises both the origin post and the delivery post of departure from the transit IMPC;
- the delivery post advises both the origin post and the transit post of arrival at the inward IMPC;
- the delivery post advises the origin post of passage through customs, departure from the inward IMPC, arrival at the delivery office and attempted and final delivery.

A.1.7.2.3 Example messages for item EE349279408US from the United States to Morocco, with open transit via Belgium

USPS advises Moroccan Post of posting/collection, arrival at the outward IMPC and departure from the outward IMPC.

EMSEVT V1.0	EVTRPT
UNB+UNOA:1+US001+MA001+991006:0430+201'	UNB+UNOA:2+J1CUSA:58:US001+J1CMAA:58:MA001+991006:0430+201'
UNH+222+EMSEVT:2:0:IP:EMS'	UNH+222+EVTRPT:100:00A:AD'
EMA+EE349279408USMA9910051130'	BGM++J1CUSAUS0011999100604300000000222+9' GRU+EVT'
	LIN+1++J10AEE349279408US:IEN'
	STS+A+XP'
	LOC+10+US'
	DTM+472:199910051130'
	NAD+CN+++++MA'
EMB+EE349279408USMA9910051815+USJFKA'	LIN+2'
	STS+A+XE'
	LOC+9+USJFKA'
	DTM+472:199910051815'
EMC+EE349279408USMA9910052300+USJFKA+274 +BEBRUA+AA572+991006'	LIN+3'
	STS+A+XD'
	LOC+9+USJFKA++BEBRUA'
	DTM+472:199910052300'
	RFF+AAK:USJFKABEBRUAAEN90274'
	LIN+4'
	STS+S+TS'
	PIA+1+AA572:T'
	DTM+472:19991006'
UNT+5+222'	UNT+22+222'

EMSEVT V1.0	EVTRPT
UNZ+1+201'	UNZ+1+201'

USPS also advises Belgian Post of departure from the outward IMPC.

EMSEVT V1.0	EVTRPT
UNB+UNOA:1+US001+BE001+991006:0440+202' UNH+674+EMSEVT:2:0:IP:EMS' EMC+EE349279408USMA9910052300+USJFKA+274 +BEBRUA+AA572+991006' UNT+3+674' UNZ+1+202'	UNB+UNOA:2+J1CUSA:58:US001+J1CBEA:58:BE001 +991006:0440+202' UNH+674+EVTRPT:100:00A:AD' BGM++J1CUSAUS0011999100604400000000674+9' GRU+EVT' LIN+1++J10AEE349279408US:IEN' STS+A+XD' LOC+9+USJFKA++BEBRUA' DTM+472:199910052300' NAD+CN+++++MA' RFF+AAK:USJFKABEBRUAAEN90274' LIN+2' STS+S+TS' PIA+1+AA572:T' DTM+472:19991006' UNT+14+674' UNZ+1+202'

Belgian Post advises USPS of arrival at and departure from the transit IMPC.

EMSEVT V1.0	EVTRPT
UNB+UNOA:1+BE001+US001+991007:1200+203' UNH+121+EMSEVT:2:0:IP:EMS' EMJ+EE349279408USMA9910070800+BEBRUA+USJ FKA+274' EMK+EE349279408USMA9910071525+BEBRUA+212 +MACASA+SN839+991007' UNT+4+121' UNZ+1+203'	UNB+UNOA:2+J1CBEA:58:BE001+J1CUSA:58:US001 +991007:1200+203' UNH+121+EVTRPT:100:00A:AD' BGM++J1CBEABE001199910071200000000121+9' GRU+EVT' LIN+1++J10AEE349279408US:IEN' STS+A+XE' LOC+13+BEBRUA++USJFKA' DTM+472:199910070800' NAD+CN+++++MA' RFF+AAK:USJFKABEBRUAAEN90274' LIN+2' STS+A+XD' LOC+13+BEBRUA++MACASA' DTM+472:199910071525' RFF+AAK:BEBRUAMACASAAEN90212' LIN+3' STS+S+TS' PIA+1+SN839:T' DTM+472:19991007' UNT+19+121' UNZ+1+203'

Belgian Post advises Moroccan Post of departure from the transit IMPC.

EMSEVT V1.0	EVTRPT
UNB+UNOA:1+BE001+MA001+991007:1215+204' UNH+569+EMSEVT:2:0:IP:EMS' EMK+EE349279408USMA9910071525+BEBRUA+212 +MACASA+SN839+991007'	UNB+UNOA:2+J1CBEA:58:BE001+J1CMAA:58:MA00 1+991007:1215+204' UNH+569+EVTRPT:100:00A:AD' BGM++J1CBEABE0011999100712150000000569+9' GRU+EVT'

EMSEVT V1.0	EVTRPT
UNT+3+569' UNZ+1+204'	LIN+1++J10AEE349279408US:IEN' STS+A+XD' LOC+13+BEBRUA++MACASA' DTM+472:199910071525' NAD+CN+++++MA' RFF+AAK:BEBRUAMACASAAEN90212' LIN+2' STS+S+TS' PIA+1+SN839:T' DTM+472:19991007' UNT+14+569' UNZ+1+204'

Moroccan Post advises Belgian Post of arrival at the inward IMPC.

EMSEVT V1.0	EVTRPT
UNB+UNOA:1+MA001+BE001+991008:1500+205' UNH+228+EMSEVT:2:0:IP:EMS' EMD+EE349279408USMA9910072245+MACASA+BE BRUA+212' UNT+3+228' UNZ+1+205'	UNB+UNOA:2+J1CMAA:58:MA001+J1CBEA:58:BE00 1+991008:1500+205' UNH+228+EVTRPT:100:00A:AD' BGM++J1CMAAMA001199910081500000000228+9' GRU+EVT' LIN+1++J10AEE349279408US:IEN' STS+A+XE' LOC+11+MACASA++BEBRUA' DTM+472:199910072245' NAD+CN+++++MA' RFF+AAK:BEBRUAMACASAAEN90212' UNT+10+228' UNZ+1+205'

Moroccan Post advises USPS of arrival at the inward IMPC, passage through customs, departure from the inward IMPC, arrival at the delivery office and attempted and final delivery.

EMSEVT V1.0	EVTRPT
UNB+UNOA:1+MA001+US001+991010:1800+206' UNH+870+EMSEVT:2:0:IP:EMS' EMD+EE349279408USMA9910072245+MACASA+BE BRUA+212' EME+EE349279408USMA9910080730+MACASA+54' EMF+EE349279408USMA9910081000+MACASA+N' EMG+EE349279408USMA9910081115+MAHADA' EMH+EE349279408USMA9910081425+MAHADA+B1	UNB+UNOA:2+J1CMAA:58:MA001+J1CUSA:58:US00 1+991010:1800+206' UNH+870+EVTRPT:100:00A:AD' BGM++J1CMAAMA0011999101018000000000870+9' GRU+EVT' LIN+1++J10AEE349279408US:IEN' STS+A+XE' LOC+11+MACASA++BEBRUA' DTM+472:199910072245' NAD+CN+++++MA' RFF+AAK:BEBRUAMACASAAEN90212' LIN+2' STS+A+VE+254' LOC+22+MACASA' DTM+472:199910080730' RFF+AAK' LIN+3' STS+A+XD' LOC+11+MACASA' DTM+472:199910081000' LIN+4' STS+A+XE' LOC+83+MAAMAHADA' DTM+472:199910081115' LIN+5'

EMSEVT V1.0	EVTRPT
7' EMI+EE349279408USMA9910090820+MAHADA+RH EIRA' UNT+8+870' UNZ+1+206'	STS+A+RA+117' RSL+1++3ABD' DTM+472:199910081425' LIN+6' STS+A+RC' RSL+1' DTM+472:199910090820' NAD+CN+++RHEIRA+++MA' UNT+32+870' UNZ+1+206'

A.1.7.3 Scenario 3 – Despatch via a transit post, with onward routing via a second transit post followed by normal delivery on the second attempt

A.1.7.3.1 Description

An EMS item is collected by one post for delivery by another post in a different country; the origin post does not make direct despatches to the delivery post but routes the item in open transit via a transit administration.

The transit administration does not make direct despatches to the delivery post but routes the item via a second transit administration which does. The delivery post successfully delivers the item to the addressee on the second attempt.

A.1.7.3.2 Event report interchange

As shown in the following figure:

NOTE: The figure only shows the case of two transit posts, but the description below covers the more general case, in which there could be several intervening transit posts.

- the origin post advises the delivery post of posting/collection and arrival at the outward IMPC;
- the origin post advises both the first transit post and the delivery post of departure from the outward IMPC;
- the first transit post advises the origin post of arrival at its transit IMPC;
- the first transit post advises the both origin post and the next transit post of departure from its transit IMPC;
- intermediate transit posts advise both the origin post and the previous transit post of arrival at their transit IMPC;
- intermediate transit posts advise both the origin post and the next transit post of departure from their transit IMPC;
- the last transit post advises both the origin post and the previous transit post of arrival at the last transit IMPC;
- the last transit post advises both the origin post and the delivery post of departure from the last transit IMPC;
- the delivery post advises both the origin post and the last transit post of arrival at the inward IMPC;
- the delivery post advises the origin post of passage through customs, departure from the inward IMPC, arrival at the delivery office and both attempted and final delivery.

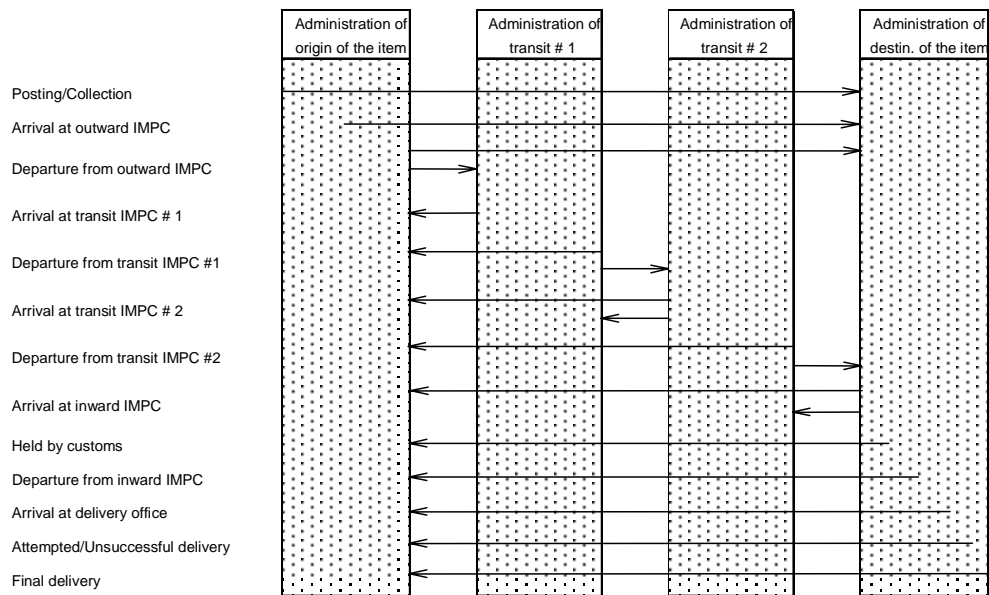


Figure 3 - Despatch via a transit post, with onward routing via a second transit post followed by normal delivery on the second attempt

A.1.7.3.3 Example messages for item EE001485889UY from Uruguay to Ghana via the United States and Switzerland

Uruguay Post advises Ghana Post of posting/collection, arrival at the outward IMPC and departure from the outward IMPC.

EMSEVT V1.0	EVTRPT
UNB+UNOA:1+UY001+GH001+991009:1200+301'	UNB+UNOA:2+J1CUYA:58:UY001+J1CGHA:58:GH001+991009:1200+301'
UNH+482+EMSEVT:2:0:IP:EMS'	UNH+482+EVTRPT:100:00A:AD'
EMA+EE001485889UYGH9910071730'	BGM++J1CUYAUUY001199910091200000000482+9'GRU+EVT'
	LIN+1++J10AEE001485889UY:IEN'
	STS+A+XP'
	LOC+10+UY'
	DTM+472:199910071730'
	NAD+CN+++++GH'
EMB+EE001485889UYGH9910081115+UYMVDA'	LIN+2'
	STS+A+XE'
	LOC+9+UYMVDA'
	DTM+472:199910081115'
EMC+EE001485889UYGH9910082300+UYMVDA+12+USLAXA+AA585+991009'	LIN+3'
	STS+A+XD'
	LOC+9+UYMVDA++USLAXA'
	DTM+472:199910082300'
	RFF+AAK:UYMVDAUSLAXAAEN90012'
	LIN+4'
	STS+S+TS'
	PIA+1+AA585:T'
	DTM+472:19991009'
UNT+5+482'	UNT+22+482'
UNZ+1+301'	UNZ+1+301'

Uruguay Post also advises USPS of departure from the outward IMPC.

EMSEVT V1.0	EVTRPT
UNB+UNOA:1+UY001+US001+991009:1012+302' UNH+453+EMSEVT:2:0:IP:EMS' EMC+EE001485889UYGH9910082300+UYMVDA+12 +USLAXA+AA585+991009' UNT+3+453' UNZ+1+302'	UNB+UNOA:2+J1CUYA:58:UY001+J1CUSA:58:US001 +991009:1012+302' UNH+453+EVTRPT:100:00A:AD' BGM++J1CUYAUY0011999100910120000000453+9' GRU+EVT' LIN+1++J10AEE001485889UY:IEN' STS+A+XD' LOC+9+UYMVDA++USLAXA' DTM+472:199910082300' NAD+CN+++++GH' RFF+AAK:UYMVDAUSLAXAAEN90012' LIN+2' STS+S+TS' PIA+1+AA585:T' DTM+472:19991009' UNT+14+453' UNZ+1+302'

USPS advises Uruguay Post of arrival at and departure from the transit IMPC.

EMSEVT V1.0	EVTRPT
UNB+UNOA:1+US001+UY001+991010:0800+303' UNH+958+EMSEVT:2:0:IP:EMS' EMJ+EE001485889UYGH9910092157+USLAXA+UY MVDA+12' EMK+EE001485889UYGH9910100430+USLAXA+258 +CHZRHC+AA251+991010' UNT+4+958' UNZ+1+303'	UNB+UNOA:2+J1CUSA:58:US001+J1CUYA:58:UY001 +991010:0800+303' UNH+958+EVTRPT:100:00A:AD' BGM++J1CUSAU0011999101008000000000958+9' GRU+EVT' LIN+1++J10AEE001485889UY:IEN' STS+A+XE' LOC+13+USLAXA++UYMVDA' DTM+472:199910092157' NAD+CN+++++GH' RFF+AAK:UYMVDAUSLAXAAEN90012' LIN+2' STS+A+XD' LOC+13+USLAXA++CHZRHC' DTM+472:199910100430' RFF+AAK:USLAXACHZRHCAEN90258' LIN+3' STS+S+TS' PIA+1+AA251:T' DTM+472:19991010' UNT+19+958' UNZ+1+303'

USPS advises Swiss Post of departure from the transit IMPC.

EMSEVT V1.0	EVTRPT
UNB+UNOA:1+US001+CH001+991010:0825+304' UNH+147+EMSEVT:2:0:IP:EMS' EMK+EE001485889UYGH9910100430+USLAXA+258 +CHZRHC+AA251+991010'	UNB+UNOA:2+J1CUSA:58:US001+J1CCHA:58:CH00 1+991010:0825+304' UNH+147+EVTRPT:100:00A:AD' BGM++J1CUSAU0011999101008250000000147+9' GRU+EVT' LIN+1++J10AEE001485889UY:IEN' STS+A+XD' LOC+13+USLAXA++CHZRHC' DTM+472:199910100430'

EMSEVT V1.0	EVTRPT
UNT+3+147' UNZ+1+304'	NAD+CN+++++GH' RFF+AAK:USLAXACHZRHCAEN90258' LIN+2' STS+S+TS' PIA+1+AA251:T' DTM+472:19991010' UNT+14+147' UNZ+1+304'

Swiss Post advises Uruguay Post of arrival at and departure from the transit IMPC.

EMSEVT V1.0	EVTRPT
UNB+UNOA:1+CH001+UY001+991011:1530+304' UNH+115+EMSEVT:2:0:IP:EMS' EMJ+EE001485889UYGH9910102245+CHZRHCAEN9012' LAXA+12' EMK+EE001485889UYGH9910111425+CHZRHCAEN90129'+GHACCA+SR586+991011' UNT+4+115' UNZ+1+304'	UNB+UNOA:2+J1CCHA:58:CH001+J1CUYA:58:UY001+991011:1530+304' UNH+115+EVTRPT:100:00A:AD' BGM++J1CCHACH0011999101115300000000115+9'GRU+EVT' LIN+1++J10AEE001485889UY:IEN' STS+A+XE' LOC+13+CHZRHCAEN9012'+USLAXA' DTM+472:199910102245' NAD+CN+++++GH' RFF+AAK:USLAXACHZRHCAEN90012' LIN+2' STS+A+XD' LOC+13+CHZRHCAEN90129'+GHACCA' DTM+472:199910111425' RFF+AAK:CHZRHCAEN90129' LIN+3' STS+S+TS' PIA+1+SR586:T' DTM+472:19991011' UNT+19+115' UNZ+1+304'

Swiss Post advises USPS of arrival at the transit IMPC.

EMSEVT V1.0	EVTRPT
UNB+UNOA:1+CH001+US001+991011:0255+305' UNH+352+EMSEVT:2:0:IP:EMS' EMJ+EE001485889UYGH9910102245+CHZRHCAEN9012' LAXA+12' UNT+3+352' UNZ+1+305'	UNB+UNOA:2+J1CCHA:58:CH001+J1CUSA:58:US001+991011:0255+305' UNH+352+EVTRPT:100:00A:AD' BGM++J1CCHACH0011999101102550000000352+9'GRU+EVT' LIN+1++J10AEE001485889UY:IEN' STS+A+XE' LOC+13+CHZRHCAEN9012'+USLAXA' DTM+472:199910102245' NAD+CN+++++GH' RFF+AAK:USLAXACHZRHCAEN90012' UNT+10+352' UNZ+1+305'

Swiss Post advises Ghana Post of departure from the transit IMPC.

EMSEVT V1.0	EVTRPT
UNB+UNOA:1+CH001+GH001+991011:1515+306' UNH+834+EMSEVT:2:0:IP:EMS'	UNB+UNOA:2+J1CCHA:58:CH001+J1CGHA:58:GH001+991011:1515+306' UNH+834+EVTRPT:100:00A:AD'

EMSEVT V1.0	EVTRPT
EMK+EE001485889UYGH9910111425+CHZRHC+129 +GHACCA+SR586+991011'	BGM++J1CCHACH0011999101115150000000834+9' GRU+EVT'
	LIN+1++J10AEE001485889UY:IEN' STS+A+XD' LOC+13+CHZRHC++GHACCA' DTM+472:199910111425' NAD+CN+++++GH' RFF+AAK:CHZRHCGHACCAAEN90129' LIN+2' STS+S+TS' PIA+1+SR586:T' DTM+472:19991011'
UNT+3+834' UNZ+1+306'	UNT+14+834' UNZ+1+306'

Ghana Post advises Swiss Post of arrival at the inward IMPC.

EMSEVT V1.0	EVTRPT
UNB+UNOA:1+GH001+CH001+991012:0030+307'	UNB+UNOA:2+J1CGHA:58:GH001+J1CCHA:58:CH00 1+991012:0030+307'
UNH+527+EMSEVT:2:0:IP:EMS'	UNH+527+EVTRPT:100:00A:AD'
EMD+EE001485889UYGH9910111925+GHACCA+CH ZRHC+129'	BGM++J1CGHAGH0011999101200300000000527+9' GRU+EVT'
	LIN+1++J10AEE001485889UY:IEN' STS+A+XE' LOC+11+GHACCA++CHZRHC' DTM+472:199910111925' NAD+CN+++++GH' RFF+AAK:CHZRHCGHACCAAEN90129'
UNT+3+527' UNZ+1+307'	UNT+10+527' UNZ+1+307'

Ghana Post advises Uruguay Post of arrival at the inward IMPC, passage through customs, departure from the inward IMPC, arrival at the delivery office and both unsuccessful and final delivery.

EMSEVT V1.0	EVTRPT
UNB+UNOA:1+GH001+UY001+991012:1850+308'	UNB+UNOA:2+J1CGHA:58:GH001+J1CUYA:58:UY00 1+991012:1850+308'
UNH+453+EMSEVT:2:0:IP:EMS'	UNH+453+EVTRPT:100:00A:AD'
EMD+EE001485889UYGH9910111925+GHACCA+CH ZRHC+129'	BGM++J1CGHAGH0011999101218500000000453+9' GRU+EVT'
	LIN+1++J10AEE001485889UY:IEN' STS+A+XE' LOC+11+GHACCA++CHZRHC' DTM+472:199910111925' NAD+CN+++++GH' RFF+AAK:CHZRHCGHACCAAEN90129'
EME+EE001485889UYGH9910120645+GHACCA+56'	LIN+2' STS+A+VE+256' LOC+22+GHACCA' DTM+472:199910120645' RFF+AAK'
EMF+EE001485889UYGH9910120830+GHACCA+N'	LIN+3' STS+A+XD' LOC+11+GHACCA' DTM+472:199910120830'
EMG+EE001485889UYGH9910120915+ACCRA'	LIN+4' STS+A+XE'

EMSEVT V1.0	EVTRPT
EMH+EE001485889UYGH9910121125+ACCRA CEN+G18'	LOC+83+GHAACCRA' DTM+472:199910120915' LIN+5'
EMI+EE001485889UYGH9910121418+ACCRA CEN+GRACE NTIM'	STS+A+RA+118' RSL+1++3ACC' LOC+83+GHAACCRA CEN' DTM+472:199910121125' LIN+6'
UNT+8+453' UNZ+1+308'	STS+A+RC' RSL+1' DTM+472:199910121418' NAD+CN+++GRACE NTIM+++GH' UNT+33+453' UNZ+1+308'

A.1.7.4 Scenario 4 – Item forwarding to an addressee who has moved to a new country

A.1.7.4.1 Description

An EMS item could not be delivered in the country of destination (e.g. the addressee has moved).

The postal handling organization that could not deliver the item will act as a transit post and forward the item to the postal handling organization responsible for delivery to the appropriate forwarding address. The item can be despatched either directly to the new delivery post of destination or in open transit through a transit post.

A.1.7.4.2 Event report interchange

Up until the point at which the delivery post establishes that the item requires forwarding, the sequence of reports is identical to that in scenario 1 or, if the item is despatched via one or more transit posts, scenarios 2 or 3. Whether or not delivery is actually attempted (in practice, the need for forwarding may be established in the delivery office, or even in the inward IMPC, without a real delivery attempt being made), the failure to make normal delivery to the original delivery address is reported back to the origin post.

At this point, the original delivery post takes on the role of transit post for forwarding of the item to the new delivery post. It reports departure of the item from its (transit) IMPC to both the origin post and the (new) delivery post – or to the next transit post if it does not send despatches directly to the new delivery post.

If the item is despatched directly to the new delivery post, the exchange of further event reports is in accordance with scenario 2, i.e.:

- the delivery post advises both the origin post and the transit post of arrival at the inward IMPC;
- the delivery post advises the origin post of passage through customs, departure from the inward IMPC, arrival at the delivery office and attempted and final delivery.

If the item is despatched in open transit, the exchange of further event reports follows that given is in accordance with scenario 3, i.e.:

- intermediate transit posts advise both the origin post and the previous transit post of arrival at their transit IMPC;
- intermediate transit posts advise both the origin post and the next transit post of departure from their transit IMPC;
- the last transit post advises both the origin post and the previous transit post of arrival at the last transit IMPC;

- the last transit post advises both the origin post and the delivery post of departure from the last transit IMPC;
- the delivery post advises both the origin post and the last transit post of arrival at the inward IMPC;
- the delivery post advises the origin post of passage through customs, departure from the inward IMPC, arrival at the delivery office and both attempted and final delivery.

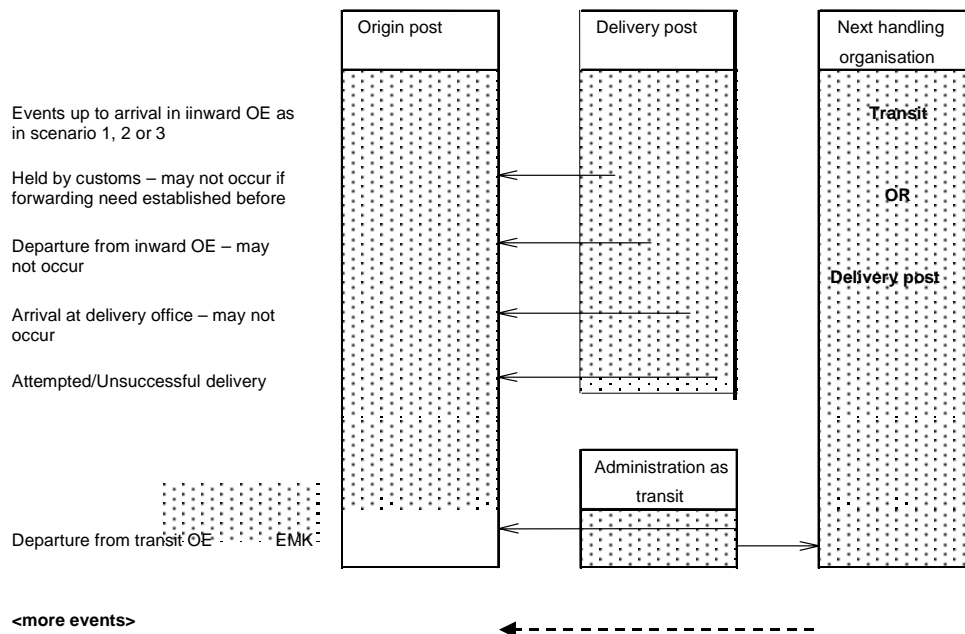


Figure 4 - Item forwarding to an addressee who has moved to a new country (simple case, without other transit posts)<<needs edit>>

A.1.7.4.3 Example messages for item EE349279408BE from Belgium to Switzerland, when the addressee has moved to Portugal

Belgian Post advises Swiss Post of posting/collection, arrival at the outward IMPC and departure from the outward IMPC.

EMSEVT V1.0	EVTRPT
UNB+UNOA:1+BE001+CH001+991006:0430+401'	UNB+UNOA:2+J1CBEA:58:BE001+J1CCHA:58:CH001+991006:0430+401'
UNH+287+EMSEVT:2:0:IP:EMS'	UNH+287+EVTRPT:100:00A:AD'
	BGM++J1CBEABE0011999100604300000000287+9'
EMA+EE349279408BECH9910051130+++1200+BRUS+102072+BASEL'	GRU+EVT'
	LIN+1++J10AEE349279408BE:IEN'
	STS+A+XP'
	LOC+10+BE'
	DTM+472:199910051130'
	NAD+OY+++++BRUS++1200'
	NAD+CN+++++BASEL+CH-102072'
EMB+EE349279408BECH9910051815+BEBRUA'	LIN+2'
	STS+A+XE'
	LOC+9+BEBRUA'
	DTM+472:199910051815'
	NAD+OY'
	NAD+CN+++++CH'
EMC+EE349279408BECH9910052300+BEBRUA+274+CHBSLA+SN432+991006'	LIN+3'

EMSEVT V1.0	EVTRPT
UNT+5+287' UNZ+1+401'	STS+A+XD' LOC+9+BEBRUA++CHBSLA' DTM+472:199910052300' RFF+AAK:BEBRUACHBSLAAEN90274' LIN+4' STS+S+TS' PIA+1+SN432:T' DTM+472:19991006' UNT+25+287' UNZ+1+401'

Swiss Post advises Belgian Post of arrival at the inward IMPC, passage through customs, departure from the inward IMPC, arrival at the delivery office and of the failed delivery attempt.

EMSEVT V1.0	EVTRPT
UNB+UNOA:1+CH001+BE001+991008:0030+402' UNH+875+EMSEVT:2:0:IP:EMS' EMD+EE349279408BECH9910060616+CHBSLA+BEB RUA+248' EME+EE349279408BECH9910060730+CHBSLA' EMF+EE349279408BECH9910061000+CHBSLA+D' EMG+EE349279408BECH9910061700+102070' EMH+EE349279408BECH9910070830+102072+F10' UNT+7+875' UNZ+1+402'	UNB+UNOA:2+J1CCHA:58:CH001+J1CBEA:58:BE001 +991008:0030+402' UNH+875+EVTRPT:100:00A:AD' BGM++J1CCHACH0011999100800300000000875+9' GRU+EVT' LIN+1++J10AEE349279408BE:IEN' STS+A+XE' LOC+11+CHBSLA++BEBRUA' DTM+472:199910060616' NAD+CN+++++CH' RFF+AAK:BEBRUACHBSLAAEN90248' LIN+2' STS+A+VE' LOC+22+CHBSLA' DTM+472:199910060730' RFF+AAK' LIN+3' STS+A+XD' RSL+1++3DUT' LOC+11+CHBSLA' DTM+472:199910061000' LIN+4' STS+A+XE' RSL+1' LOC+83+CHA102070' DTM+472:199910061700' LIN+5' STS+A+RA+110' RSL+1++3AFW' LOC+83+CHA102072' DTM+472:199910070830' UNT+30+875' UNZ+1+402'

NOTE: If the forwarding need is established before the item reaches the delivery office, some or all of the reports of passage through customs, departure from the inward IMPC and arrival at the delivery office may not occur.

Swiss Post advises Belgian Post of departure from the transit IMPC.

EMSEVT V1.0	EVTRPT
UNB+UNOA:1+CH001+BE001+991009:1230+403' UNH+876+EMSEVT:2:0:IP:EMS' EMK+EE349279408BEPT9910091040+CHZRHC+485 +PTLISA+SR886+991009'	UNB+UNOA:2+J1CCHA:58:CH001+J1CBEA:58:BE001 +991009:1230+403' UNH+876+EVTRPT:100:00A:AD' BGM++J1CCHACH0011999100912300000000876+9' GRU+EVT'

EMSEVT V1.0	EVTRPT
UNT+3+876' UNZ+1+403'	LIN+1++J10AEE349279408BE:IEN' STS+A+XD' LOC+13+CHZRHC++PTLISA' DTM+472:199910091040' NAD+CN+++++PT' RFF+AAK:CHZRHCPTLISAAEN90485' LIN+2' STS+S+TS' PIA+1+SR886:T' DTM+472:19991009' UNT+14+876' UNZ+1+403'

Swiss Post advises Correios de Portugal of departure from the transit IMPC.

EMSEVT V1.0	EVTRPT
UNB+UNOA:1+CH001+PT001+991009:1210+404' UNH+11+EMSEVT:2:0:IP:EMS' EMK+EE349279408BEPT9910091040+CHZRHC+485 +PTLISA+SR886+991009' UNT+3+11' UNZ+1+404'	UNB+UNOA:2+J1CCHA:58:CH001+J1CPTA:58:PT001 +991009:1210+404' UNH+11+EVTRPT:100:00A:AD' BGM++J1CCHACH001199910091210000000011+9' GRU+EV'T LIN+1++J10AEE349279408BE:IEN' STS+A+XD' LOC+13+CHZRHC++PTLISA' DTM+472:199910091040' NAD+CN+++++PT' RFF+AAK:CHZRHCPTLISAAEN90485' LIN+2' STS+S+TS' PIA+1+SR886:T' DTM+472:19991009' UNT+14+11' UNZ+1+404'

Correios de Portugal advises Swiss Post of arrival at the inward IMPC.

EMSEVT V1.0	EVTRPT
UNB+UNOA:1+PT001+CH001+991010:0700+405' UNH+182+EMSEVT:2:0:IP:EMS' EMD+EE349279408BEPT9910100300+PTLISA+CHZ RHC+485' UNT+3+182' UNZ+1+405'	UNB+UNOA:2+J1CPTA:58:PT001+J1CCHA:58:CH001 +991010:0700+405' UNH+182+EVTRPT:100:00A:AD' BGM++J1CPTAPT0011999101007000000000182+9' GRU+EV'T LIN+1++J10AEE349279408BE:IEN' STS+A+XE' LOC+11+PTLISA++CHZRHC' DTM+472:199910100300' NAD+CN+++++PT' RFF+AAK:CHZRHCPTLISAAEN90485' UNT+10+182' UNZ+1+405'

Correios de Portugal advises Belgian Post of arrival at the inward IMPC, passage through customs, departure from the inward IMPC, arrival at the delivery office and attempted and final delivery.

EMSEVT V1.0	EVTRPT
UNB+UNOA:1+PT001+BE001+991011:2100+406' UNH+924+EMSEVT:2:0:IP:EMS'	UNB+UNOA:2+J1CPTA:58:PT001+J1CBEA:58:BE001 +991011:2100+406' UNH+924+EVTRPT:100:00A:AD' BGM++J1CPTAPT0011999101121000000000924+9'

EMSEVT V1.0	EVTRPT
EMD+EE349279408BEPT9910100300+PTLISA+CHZ RHC+485'	GRU+EVT' LIN+1++J10AEE349279408BE:IEN' STS+A+XE' LOC+11+PTLISA++CHZRHC' DTM+472:199910100300' NAD+CN+++++PT' RFF+AAK:CHZRHCPTLISAAEN90485'
EME+EE349279408BEPT9910100845+PTLISA'	LIN+2' STS+A+VE' LOC+22+PTLISA' DTM+472:199910100845' RFF+AAK'
EMF+EE349279408BEPT9910101500+PTLISA'	LIN+3' STS+A+XD' LOC+11+PTLISA' DTM+472:199910101500'
EMG+EE349279408BEPT9910101850+4567'	LIN+4' STS+A+XE' LOC+83+PTA4567' DTM+472:199910101850'
EMH+EE349279408BEPT9910110850+4567+A99'	LIN+5' STS+A+RA+999' RSL+1++3ADR' DTM+472:199910110850'
EMI+EE349279408BEPT9910111527+4567+SANCHE Z'	LIN+6' STS+A+RC' RSL+1' DTM+472:199910111527' NAD+CN+++SANCHEZ+++PT'
UNT+8+924' UNZ+1+406'	UNT+32+924' UNZ+1+406'

A.1.7.5 Scenario 5 – Return of item after delivery failure

A.1.7.5.1 Description

An EMS item cannot be delivered and has to be returned to the origin post. The returning post makes direct despatches to the postal handling organization concerned.

A.1.7.5.2 Event report interchange

Up until the point at which the delivery post establishes that the item cannot be delivered and has to be returned, the sequence of reports is identical to that in scenario 1 or, if the item is despatched via one or more transit posts, scenarios 2 or 3. Whether or not delivery is actually attempted (in practice, inability to deliver the item may be established in the delivery office, or even in the inward IMPC, without a real delivery attempt being made), the failure to make normal delivery to the original delivery address is reported back to the origin post.

At this point, the original delivery post takes on responsibility for return of the item to the new delivery post (i.e. the origin post). It reports departure of the item from its IMPC; the (new) delivery post reports back receipt of the item.

In normal circumstances, no further events will be reported, since the (new) delivery post and the origin post are one and the same. However, the origin post may "re-export" the item to the same or another administration. In this case, the sequence of reports will continue.

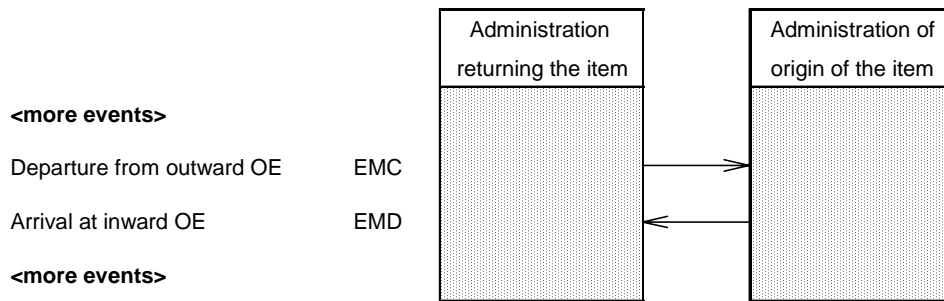


Figure 5 - Return of item after delivery failure <<needs edit>>

A.1.7.5.3 Example messages for item EE005182455FI returned to Finland Post by An Post (Ireland)

An Post, having been advised of the item by Finland Post, responds normally by reporting arrival of the item at the inward IMPC, passage through customs, departure from the inward IMPC, arrival at the delivery office and the failed delivery attempt.

EMSEVT V1.0	EVTRPT
UNB+UNOA:1+IE001+FI001+991013:2100+500'	UNB+UNOA:2+J1CIEA:58:IE001+J1CFIA:58:FI001+991013:2100+500'
UNH+8825+EMSEVT:2:0:IP:EMS'	UNH+8825+EVTRPT:100:00A:AD'
EMD+EE005182455FIIIE9910120430+IEDUB+FIHELAA+18'	BGM++J1CIEAIE001199910132100000008825+9'GRU+EV'T
(see NOTE 2)	LIN+1++J10AEE005182455FI: IEN' STS+A+XE' LOC+11+IEDUBA++FIHELAA' DTM+472:199910120430' NAD+CN+++++IE' RFF+AAK:FIHELAAIEDUIBAAEN90018'
EME+EE005182455FIIIE9910120830+IEDUBA'	LIN+2' STS+A+VE' LOC+22+IEDUBA' DTM+472:199910120830' RFF+AAK'
EMF+EE005182455FIIIE9910121700+IEDUBA+N'	LIN+3' STS+A+XD' LOC+11+IEDUBA' DTM+472:199910121700'
EMG+EE005182455FIIIE9910130500+DUBLIN'	LIN+4' STS+A+XE' LOC+83+IEADUBLIN' DTM+472:199910130500'
EMH+EE005182455FIIIE9910131630+DUBLIN'	LIN+5' STS+A+RA' DTM+472:199910131630'
UNT+7+8825'	UNT+26+8825'
UNZ+1+500'	UNZ+1+500'

NOTE 1: If the delivery failure is established before the item reaches the delivery office, some or all of the reports of passage through customs, departure from the inward IMPC and arrival at the delivery office may not occur.

NOTE 2: The original EMD gave IEDUB, which is not an IMPC address, as event location. The conversion assumes that this should have been IEDUBA.

An Post, despatches the item back to Finland Post, advising it of departure of the item from its (now outward) IMPC.

EMSEVT V1.0	EVTRPT
UNB+UNOA:1+IE001+FI001+991015:2050+501' UNH+516+EMSEVT:2:0:IP:EMS' EMC+EE005182455FIFI9910151840+IEDUBA+55+FIH ELA+EI438+991015'	UNB+UNOA:2+J1CFIA:58:IE001+J1CFIA:58:FI001+99 1015:2050+501' UNH+516+EVTRPT:100:00A:AD' BGM++J1CFIAIE0011999101520500000000516+9' GRU+EVT' LIN+1++J10AEE005182455FI:IEN' STS+A+XD' LOC+9+IEDUBA++FIHELA' DTM+472:199910151840' NAD+CN+++++FI' RFF+AAK:IEDUBAFIHELAAEN90055' LIN+2' STS+S+TS' PIA+1+EI438:T' DTM+472:19991015'
UNT+3+516' UNZ+1+501'	UNT+14+516' UNZ+1+501'

Finland Post responds by advising An Post when the item is received at the inward IMPC.

EMSEVT V1.0	EVTRPT
UNB+UNOA:1+FI001+IE001+991016:0630+502' UNH+875+EMSEVT:2:0:IP:EMS' EMD+EE005182455FIFI9910160400+FIHELA+IEDUB A+55'	UNB+UNOA:2+J1CFIA:58:FI001+J1CFIA:58:IE001+99 1016:0630+502' UNH+875+EVTRPT:100:00A:AD' BGM++J1CFIAFI0011999101606300000000875+9' GRU+EVT' LIN+1++J10AEE005182455FI:IEN' STS+A+XE' LOC+11+FIHELA++IEDUBA' DTM+472:199910160400' NAD+CN+++++FI' RFF+AAK:IEDUBAFIHELAAEN90055'
UNT+3+875' UNZ+1+502'	UNT+10+875' UNZ+1+502'

A.1.7.6 Scenario 6 – Return of item via a transit post

A.1.7.6.1 Description

An EMS item cannot be delivered and has to be returned to the origin post. The returning post does not make direct despatches to the origin post but sends the item in open transit via a transit post that does.

A.1.7.6.2 Event report interchange

The diagram below shows only events which follow the decision to return the item, reported in a delivery failure event report. The subsequent tracking information exchange involves:

- the returning post advising both the origin post and the transit post of departure from its IMPC;
- the transit post advising both the returning post and the origin post of arrival in the transit IMPC, and the origin post of departure from there;
- the origin post advising both the transit post and the returning post of the arrival of the item.

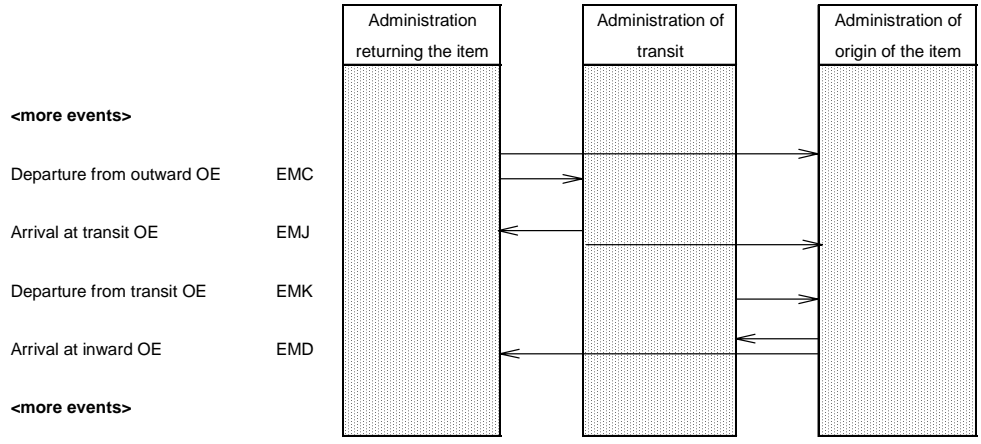


Figure 6 - Return of item via a transit post <<needs edit>>

A.1.7.6.3 Example messages for item EE001459115UY returned from the U.K. to Uruguay via the United States and subsequently re-exported to Argentina by Uruguay Post

Royal Mail advises Uruguay Post of despatch of the item.

EMSEVT V1.0	EVTRPT
UNB+UNOA:1+GB001+UY001+991018:1515+601'	UNB+UNOA:2+J1CGBA:58:GB001+J1CUYA:58:UY001+991018:1515+601'
UNH+55+EMSEVT:2:0:IP:EMS'	UNH+55+EVTRPT:100:00A:AD'
EMC+EE001459115UYUY9910181200+GBCVTA+275+USORDA+AA958+991018'	BGM++J1CGBAGB0011999101815150000000055+9'GRU+EVT'
	LIN+1++J10AEE001459115UY:IEN'
	STS+A+XD'
	LOC+9+GBCVTA++USORDA'
	DTM+472:199910181200'
	NAD+CN+++++UY'
	RFF+AAK:GBCVTAUSORDAAEN90275'
	LIN+2'
	STS+S+TS'
	PIA+1+AA958:T'
	DTM+472:19991018'
UNT+3+55'	UNT+14+55'
UNZ+1+601'	UNZ+1+601'

Royal Mail advises USPS of despatch of the item.

EMSEVT V1.0	EVTRPT
UNB+UNOA:1+GB001+US001+991018:1522+602'	UNB+UNOA:2+J1CGBA:58:GB001+J1CUSA:58:US001+991018:1522+602'
UNH+698+EMSEVT:2:0:IP:EMS'	UNH+698+EVTRPT:100:00A:AD'
EMC+EE001459115UYUY9910181200+GBCVTA+275+USORDA+AA958+991018'	BGM++J1CGBAGB00119991018152200000000698+9'GRU+EVT'
	LIN+1++J10AEE001459115UY:IEN'
	STS+A+XD'
	LOC+9+GBCVTA++USORDA'
	DTM+472:199910181200'
	NAD+CN+++++UY'
	RFF+AAK:GBCVTAUSORDAAEN90275'
	LIN+2'

EMSEVT V1.0	EVTRPT
UNT+3+698' UNZ+1+602'	STS+S+TS' PIA+1+AA958:T' DTM+472:19991018' UNT+14+698' UNZ+1+602'

USPS confirms reception to Royal Mail.

EMSEVT V1.0	EVTRPT
UNB+UNOA:1+US001+GB001+991019:0040+603' UNH+992+EMSEVT:2:0:IP:EMS' EMJ+EE001459115UYUY9910181710+USORDA+GB CVTA+275' UNT+3+992' UNZ+1+603'	UNB+UNOA:2+J1CUSA:58:US001+J1CGBA:58:GB00 1+991019:0040+603' UNH+992+EVTRPT:100:00A:AD' BGM++J1CUSAUS0011999101900400000000992+9' GRU+EVT' LIN+1++J10AEE001459115UY:IEN' STS+A+XE' LOC+13+USORDA++GBCVTA' DTM+472:199910181710' NAD+CN+++++UY' RFF+AAK:GBCVTAUSORDAAEN90275' UNT+10+992' UNZ+1+603'

USPS advises Uruguay Post of both reception and despatch of the item.

EMSEVT V1.0	EVTRPT
UNB+UNOA:1+US001+UY001+991019:1425+604' UNH+445+EMSEVT:2:0:IP:EMS' EMJ+EE001459115UYUY9910181710+USORDA+GB CVTA+275' EMK+EE001459115UYUY9910190050+USORDA+128 +UYMVDA+UA1245+991019' UNT+4+445' UNZ+1+604'	UNB+UNOA:2+J1CUSA:58:US001+J1CUYA:58:UY001 +991019:1425+604' UNH+445+EVTRPT:100:00A:AD' BGM++J1CUSAUS0011999101914250000000445+9' GRU+EVT' LIN+1++J10AEE001459115UY:IEN' STS+A+XE' LOC+13+USORDA++GBCVTA' DTM+472:199910181710' NAD+CN+++++UY' RFF+AAK:GBCVTAUSORDAAEN90275' LIN+2' STS+A+XD' LOC+13+USORDA++UYMVDA' DTM+472:199910190050' RFF+AAK:USORDAUYMVDAAEN90128' LIN+3' STS+S+TS' PIA+1+UA1245:T' DTM+472:19991019' UNT+19+445' UNZ+1+604'

Uruguay Post confirms reception of the item to Royal Mail...

EMSEVT V1.0	EVTRPT
UNB+UNOA:1+UY001+GB001+991020:0628+605' UNH+25+EMSEVT:2:0:IP:EMS' EMD+EE001459115UYUY9910200537+UYMVDA+US ORDA+128'	UNB+UNOA:2+J1CUYA:58:UY001+J1CGBA:58:GB00 1+991020:0628+605' UNH+25+EVTRPT:100:00A:AD' BGM++J1CUYAU0011999102006280000000025+9' GRU+EVT'

EMSEVT V1.0	EVTRPT
UNT+3+25' UNZ+1+605'	LIN+1++J10AEE001459115UY:IEN' STS+A+XE' LOC+11+UYMVDA++USORDA' DTM+472:199910200537' NAD+CN+++++UY' RFF+AAK:USORDAUYMVDAAEN90128' UNT+10+25' UNZ+1+605'

... and to USPS.

EMSEVT V1.0	EVTRPT
UNB+UNOA:1+UY001+US001+991020:0630+606' UNH+364+EMSEVT:2:0:IP:EMS' EMD+EE001459115UYUY9910200537+UYMVDA+USORDA+128' UNT+3+364' UNZ+1+606'	UNB+UNOA:2+J1CUYA:58:UY001+J1CUSA:58:US001+991020:0630+606' UNH+364+EVTRPT:100:00A:AD' BGM++J1CUYAUUY00119991020063000000000364+9' GRU+EVT' LIN+1++J10AEE001459115UY:IEN' STS+A+XE' LOC+11+UYMVDA++USORDA' DTM+472:199910200537' NAD+CN+++++UY' RFF+AAK:USORDAUYMVDAAEN90128' UNT+10+364' UNZ+1+606'

Uruguay now advises Argentine Post of despatch of the item.<<should it not send the A event too>>

EMSEVT V1.0	EVTRPT
UNB+UNOA:1+UY001+AR001+991025:0750+607' UNH+556+EMSEVT:2:0:IP:EMS' EMC+EE001459115UYAR9910250125+UYMVDA+128+ARBUEA+DL675+991025' UNT+3+556' UNZ+1+607'	UNB+UNOA:2+J1CUYA:58:UY001+J1CARA:58:AR001+991025:0750+607' UNH+556+EVTRPT:100:00A:AD' BGM++J1CUYAUUY00119991025075000000000556+9' GRU+EVT' LIN+1++J10AEE001459115UY:IEN' STS+A+XD' LOC+9+UYMVDA++ARBUEA' DTM+472:199910250125' NAD+CN+++++AR' RFF+AAK:UYMVDAARBUEAAEN90128' LIN+2' STS+S+TS' PIA+1+DL675:T' DTM+472:19991025' UNT+14+556' UNZ+1+607'

A.1.7.7 Scenario 7 – Return of item via multiple transit posts

A.1.7.7.1 Description

An EMS item cannot be delivered and has to be returned to the origin post. The returning post does not make direct despatches to the origin post but sends the item in open transit via a transit post; this uses a second transit post to despatch items in open transit to the origin (which is also the final delivery) post.

A.1.7.7.2 Event report interchange

The diagram below shows only events which follow the decision to return the item, reported in a delivery failure event report to the origin post. The subsequent tracking information exchange involves:

- the returning post advising both the origin post and the first transit post of departure from its IMPC;
- the first transit post advising both the returning post and the origin post of arrival in the transit IMPC, and the origin post of departure from there;
- each subsequent transit post advising:
 - the previous transit post and the origin (=new delivery) post of arrival of the item;
 - the origin (= new delivery) post and, if any, the next transit post of despatch of the item;
- the origin post advising both the last transit post and the returning post of the arrival of the item.

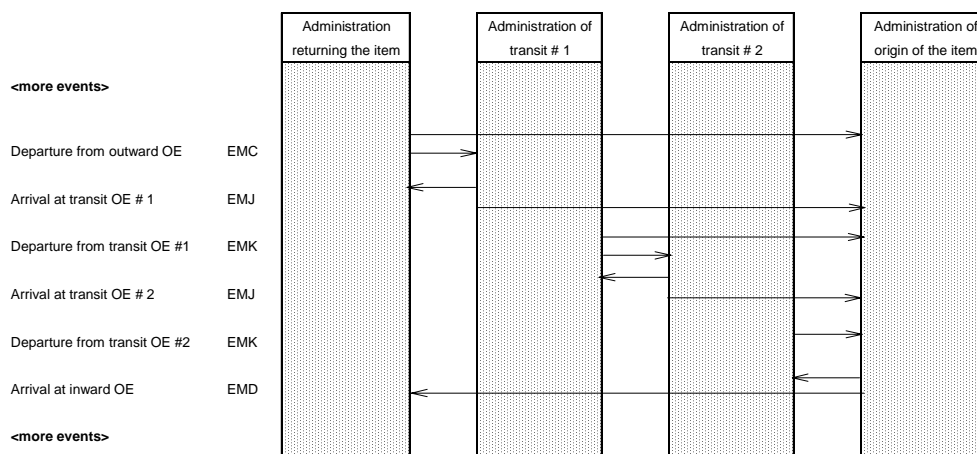


Figure 7 - Return of item via multiple transit posts <<needs edit>>

A.1.7.7.3 Example messages for item EE103159301NZ returned from Zimbabwe to New Zealand via Italy and Singapore

Zimbabwe Post reports despatch of the item to New Zealand Post...

EMSEVT V1.0	EVTTRPT
UNB+UNOA:1+ZW001+NZ001+991020:2100+701'	UNB+UNOA:2+J1CZWA:58:ZW001+J1CNZA:58:NZ001+991020:2100+701'
UNH+531+EMSEVT:2:0:IP:EMS'	UNH+531+EVTTRPT:100:00A:AD'
EMC+EE103159301NZNZ9910201600+ZWHREA+142+ITMILA+AZ991+991020'	BGM++J1CZWAZW0011999102021000000000531+9'GRU+EVT'
	LIN+1++J10AEE103159301NZ:IEN'
	STS+A+XD'
	LOC+9+ZWHREA++ITMILA'
	DTM+472:199910201600'
	NAD+CN++++++NZ'
	RFF+AAK:ZWHREAITMILAAEN90142'
	LIN+2'
	STS+S+TS'
	PIA+1+AZ991:T'
	DTM+472:19991020'
UNT+3+531'	UNT+14+531'
UNZ+1+701'	UNZ+1+701'

... and to Ente Poste Italiane.

EMSEVT V1.0	EVTRPT
UNB+UNOA:1+ZW001+IT001+991020:2045+702'	UNB+UNOA:2+J1CZWA:58:ZW001+J1CITA:58:IT001+991020:2045+702'
UNH+832+EMSEVT:2:0:IP:EMS'	UNH+832+EVTRPT:100:00A:AD'
EMC+EE103159301NZNZ9910201600+ZWHREA+142+ITMILA+AZ991+991020'	BGM++J1CZWAZW0011999102020450000000832+9'GRU+EVT'
	LIN+1++J10AEE103159301NZ:IEN'
	STS+A+XD'
	LOC+9+ZWHREA++ITMILA'
	DTM+472:199910201600'
	NAD+CN+++++NZ'
	RFF+AAK:ZWHREAITMILAAEN90142'
	LIN+2'
	STS+S+TS'
	PIA+1+AZ991:T'
	DTM+472:19991020'
UNT+3+832'	UNT+14+832'
UNZ+1+702'	UNZ+1+702'

Ente Post Italiane confirms reception of the item to Zimbabwe Post.

EMSEVT V1.0	EVTRPT
UNB+UNOA:1+IT001+ZW001+991022:0315+703'	UNB+UNOA:2+J1CITA:58:IT001+J1CZWA:58:ZW001+991022:0315+703'
UNH+361+EMSEVT:2:0:IP:EMS'	UNH+361+EVTRPT:100:00A:AD'
EMJ+EE103159301NZNZ9910211008+ITMILA+ZWHR EA+142'	BGM++J1CITAIT0011999102203150000000361+9'GRU+EVT'
	LIN+1++J10AEE103159301NZ:IEN'
	STS+A+XE'
	LOC+13+ITMILA++ZWHREA'
	DTM+472:199910211008'
	NAD+CN+++++NZ'
	RFF+AAK:ZWHREAITMILAAEN90142'
UNT+3+361'	UNT+10+361'
UNZ+1+703'	UNZ+1+703'

Ente Post Italiane reports reception and despatch of the item to New Zealand Post...

EMSEVT V1.0	EVTRPT
UNB+UNOA:1+IT001+NZ001+991022:0800+704'	UNB+UNOA:2+J1CITA:58:IT001+J1CNZA:58:NZ001+991022:0800+704'
UNH+236+EMSEVT:2:0:IP:EMS'	UNH+236+EVTRPT:100:00A:AD'
EMJ+EE103159301NZNZ9910211008+ITMILA+ZWHR EA+142'	BGM++J1CITAIT0011999102208000000000236+9'GRU+EVT'
	LIN+1++J10AEE103159301NZ:IEN'
	STS+A+XE'
	LOC+13+ITMILA++ZWHREA'
	DTM+472:199910211008'
	NAD+CN+++++NZ'
	RFF+AAK:ZWHREAITMILAAEN90142'
	LIN+2'
	STS+A+XD'
	LOC+13+ITMILA++SGSINA'
	DTM+472:199910211730'
	RFF+AAK:ITMILASGSINAAEN90198'
EMK+EE103159301NZNZ9910211730+ITMILA+198+SGSINA+SQ1217+991021'	LIN+3'
	STS+S+TS'

EMSEVT V1.0	EVTRPT
UNT+4+236' UNZ+1+704'	PIA+1+SQ1217:T' DTM+472:19991021' UNT+19+236' UNZ+1+704'

... and despatch of the item to Singapore Post.

EMSEVT V1.0	EVTRPT
UNB+UNOA:1+IT001+SG001+991022:0745+705' UNH+945+EMSEVT:2:0:IP:EMS' EMK+EE103159301NZNZ9910211730+ITMILA+198+S GSINA+SQ1217+991021'	UNB+UNOA:2+J1CITA:58:IT001+J1CSGA:58:SG001+ 991022:0745+705' UNH+945+EVTRPT:100:00A:AD' BGM++J1CITAIT0011999102207450000000945+9' GRU+EVT' LIN+1++J10AEE103159301NZ:IEN' STS+A+XD' LOC+13+ITMILA++SGSINA' DTM+472:199910211730' NAD+CN+++++NZ' RFF+AAK:ITMILASGSINAAEN90198' LIN+2' STS+S+TS' PIA+1+SQ1217:T' DTM+472:19991021' UNT+14+945' UNZ+1+705'
UNT+3+945' UNZ+1+705'	

Singapore Post confirms item reception to Ente Post Italiana.

EMSEVT V1.0	EVTRPT
UNB+UNOA:1+SG001+IT001+991023:1245+706' UNH+58+EMSEVT:2:0:IP:EMS' EMJ+EE103159301NZNZ9910221850+SGSINA+ITMIL A+198'	UNB+UNOA:2+J1CSGA:58:SG001+J1CITA:58:IT001+ 991023:1245+706' UNH+58+EVTRPT:100:00A:AD' BGM++J1CSGASG0011999102312450000000058+9' GRU+EVT' LIN+1++J10AEE103159301NZ:IEN' STS+A+XE' LOC+13+SGSINA++ITMILA' DTM+472:199910221850' NAD+CN+++++NZ' RFF+AAK:ITMILASGSINAAEN90198' UNT+10+58' UNZ+1+706'
UNT+3+58' UNZ+1+706'	

Singapore Post reports reception and despatch of the item to New Zealand Post.

EMSEVT V1.0	EVTRPT
UNB+UNOA:1+SG001+NZ001+991023:1245+706' UNH+58+EMSEVT:2:0:IP:EMS' EMJ+EE103159301NZNZ9910221850+SGSINA+ITMIL A+198'	UNB+UNOA:2+J1CSGA:58:SG001+J1CNZA:58:NZ001 +991023:1245+706' UNH+58+EVTRPT:100:00A:AD' BGM++J1CSGASG0011999102312450000000058+9' GRU+EVT' LIN+1++J10AEE103159301NZ:IEN' STS+A+XE' LOC+13+SGSINA++ITMILA' DTM+472:199910221850' NAD+CN+++++NZ' RFF+AAK:ITMILASGSINAAEN90198' LIN+2'
EMK+EE103159301NZNZ991022217+SGSINA+378+	

EMSEVT V1.0	EVTRPT
NZAKLA+SQ584+991022'	STS+A+XD' LOC+13+SGSINA++NZAKLA' DTM+472:199910222217' RFF+AAK:SGSINANZAKLAAEN90378' LIN+3' STS+S+TS' PIA+1+SQ584:T' DTM+472:19991022'
UNT+4+58' UNZ+1+706'	UNT+19+58' UNZ+1+706'

New Zealand Post confirms reception of the item to Singapore Post...

EMSEVT V1.0	EVTRPT
UNB+UNOA:1+NZ001+SG001+991023:1630+707'	UNB+UNOA:2+J1CNZA:58:NZ001+J1CSGA:58:SG001 +991023:1630+707'
UNH+48+EMSEVT:2:0:IP:EMS'	UNH+48+EVTRPT:100:00A:AD' BGM++J1CNZANZ001199910231630000000048+9' GRU+EV'T'
EMD+EE103159301NZNZ9910231018+NZAKLA+SGS INA+378'	GRU+EV'T' LIN+1++J10AEE103159301NZ:IEN' STS+A+XE' LOC+11+NZAKLA++SGSINA' DTM+472:199910231018' NAD+CN+++++NZ' RFF+AAK:SGSINANZAKLAAEN90378'
UNT+3+48' UNZ+1+707'	UNT+10+48' UNZ+1+707'

... and to Zimbabwe Post.

EMSEVT V1.0	EVTRPT
UNB+UNOA:1+NZ001+ZW001+991023:1639+708'	UNB+UNOA:2+J1CNZA:58:NZ001+J1CZWA:58:ZW00 1+991023:1639+708'
UNH+875+EMSEVT:2:0:IP:EMS'	UNH+875+EVTRPT:100:00A:AD' BGM++J1CNZANZ0011999102316390000000875+9' GRU+EV'T'
EMD+EE103159301NZNZ9910231018+NZAKLA+SGS INA+378'	GRU+EV'T' LIN+1++J10AEE103159301NZ:IEN' STS+A+XE' LOC+11+NZAKLA++SGSINA' DTM+472:199910231018' NAD+CN+++++NZ' RFF+AAK:SGSINANZAKLAAEN90378'
UNT+3+875' UNZ+1+708'	UNT+10+875' UNZ+1+708'

A.1.8 EMSEVT V0

The main differences between EMSEVT V1.0 and the older EMSEVT V0 are that EMSEVT V0:

1. uses IMPC codes IATA 3-character location codes (e.g. BRU) to designate office of exchange locations, whereas EMSEVT V1.0 uses IMPC codes (e.g. BEBRUA);
2. uses EMSEVT:1:0 in place of the earlier EMSEVT:2:0 in the UNH segment;
3. does not provide the code of the despatch location in EMD segments;
4. does not allow specification of customs retention code (e.g. 54 = CN22/23 missing) in EME segments;

5. does not allow specification of non-delivery action taken (e.g. A, B, F, G) and unsuccessful delivery code (e.g. 10 = incorrect address) in EMH segments;
6. does not provide the code of the despatch location in EMJ segments.

These differences do not significantly impact the conversion from EMSEVT V0 to EVTRPT:

1. EVTRPT supports the use of any valid S25 location code, so IATA 3-character codes may be used in place of IMPC codes if, in converting from EMSEVT V0, the full IMPC code is not known;
2. EVTRPT uses its own UNH message type indicator, which is not affected by the EMSEVT version difference;
3. In events reporting arrival in a processing facility, supply of the despatch location is not mandatory in EVTRPT, so this attribute may simply be omitted in conversion of EMSEVT V0 messages;
4. The customs retention code is not mandatory in EVTRPT messages, so it may be omitted if it is not known;
5. Non-delivery action taken and unsuccessful delivery code are not mandatory in EVTRPT messages, so may be omitted if they are not known;
6. In events reporting arrival in a processing facility, supply of the despatch location is not mandatory in EVTRPT, so this attribute may simply be omitted in conversion of EMSEVT V0 messages.

A.1.9 EMSEVT V0.1, as used in the EPG system

The main differences between EMSEVT V1.0 and the older EMSEVT V0.1 used in the EPG system are that EPG use of EMSEVT V0.1:

1. uses IMPC codes IATA 3-character location codes (e.g. BRU) to designate office of exchange locations, whereas EMSEVT V1.0 uses IMPC codes (e.g. BEBRUA);
2. uses EMSEVT:1:1 in place of EMSEVT:2:0 in the UNH segment;
3. supports a number of item identifier structures that are not UPU standard S10-compliant;
4. do not provide the code of the despatch location in EMD and EMJ segments;
5. does not make use of (report) transit events;
6. uses a specific code (DL¹⁴), in UNB segments, to indicate that IPC should automatically receive a copy of EPG interchanges.

These differences do not significantly impact the conversion from EMSEVT V0.1 to EVTRPT:

1. EVTRPT supports the use of any valid S25 location code, so IATA 3-character codes may be used in place of IMPC codes if, in converting from EMSEVT V0.1, the full IMPC code is not known;
2. EVTRPT uses its own UNH message type indicator, which is not affected by the EMSEVT version difference;
3. EPG item numbers that are not compliant with S10 are catered for by means of prefix J10B followed by an S31 issuer code of the issuing post. Details may be found in the section on licence plates in UPU standard S25;

EXAMPLE: TPG Post use identifiers of the form 3SXXXX9999999, where X represents any alphanumeric character and 9 any numeric one. The ISO/IEC 15459 compliant form of this would be J10BNLA3SXXXX9999999.

¹⁴ DL is also used in PRIME, which uses EMSEVT V1.0 messages.

4. In events reporting arrival in a processing facility, supply of the despatch location is not mandatory in EVTRPT, so this attribute may simply be omitted in conversion of EMSEVT V0.1 messages;
5. The rules regarding which events are to be reported are product/service specific and do not impact the conversion of EMSEVT V 0.1 messages;
6. The use of DL (distribution list) to distinguish between physical and logical network addresses dates from 1996. In the intervening time, third party networking arrangements have been changed and other mechanisms are used for copying messages to IPC. This difference therefore has no impact on the conversion from EMSEVT to EVTRPT.

A.2 Tracking of items - EVTRPT as a replacement for TRAKIT

To be completed.

A.3 EVTRPT as a replacement for RESDIT V1.0 (UPU standard M22)

This section is incomplete. It will be completed in parallel with testing of the specification.

A.3.1 RESDIT events; correspondence with EVTRPT event-codes

RESDIT defines six events. The correspondence of these with EVTRPT event-codes is as follows:

RESDIT Event	EVTRPT Event	Usage notes
74 received	XT carrier reception	
82 returned	XC carrier hand-off	"Returned" is distinguished from "handed over" by the presence of an appropriate status value, indicating that the transport has been abandoned, and reason code, indicating the reason for return. Note that the reported date (and time) is that at which the entity is actually returned or made available for collection, <u>not</u> that at which the decision to return it was made. Where a record of the decision timing is required, this may be communicated using EVTRPT event TR (transport assignment) with an empty conveyance specification and a status value indicating 'to be returned'.
24 or 31 uplifted (departed or en route)	TS transport departure	
21 or 42 handed over (delivered or hand over delivered)	XC carrier hand-off	The status value distinguishes between the case in which the entity has been delivered by the carrier into the control of the recipient and the case in which it is available for collection.
57 pending (not loaded)	TR transport assignment	This case is distinguished from (re-)assignment by the presence of an appropriate reason code value. If the new conveyance has not yet been assigned, the associated conveyance identity is omitted.
6 assigned (booked)	TR transport assignment	

RESBIT Event	EVTRPT Event	Usage notes
(none)	TA transport arrival	Provides an additional reporting possibility which is not supported by RESBIT.
(none)	TE transport event	Provides an additional reporting possibility which is not supported by RESBIT.
(none)	TL transport loading	Provides an additional reporting possibility which is not supported by RESBIT.
(none)	TD transport offloading	Provides an additional reporting possibility which is not supported by RESBIT.

A.3.2 Business data element usage

RESBIT event(s)	RESBIT data flow element	EVTRPT data flow element	Usage notes

A.3.3 Message structure

RESBIT uses a nested structure in which information about events occurring to aggregates and containers is reported as a subset of information about the transport consignment to which they pertain. Also, up to five sets of conveyance information may be reported in respect of a single event-instance for a given consignment.

In contrast, EVTRPT uses a flat structure in which events are reported independently of one another, but may be related by the provision of cross-reference information. This is illustrated in the following diagram, which shows the mapping of a RESBIT message reporting a series of events to receptacles and containers belonging to multiple consignments onto EVTRPT events.

C1	consignment-document number				
C1	consignment-response (all/part indicator)				
	E1	consignment-event			
		consignment-event-date(& time)			
		consignment-event-reason			
		place-of-hand-over			
		partner-ID			
		T1	carrier		
			conveyance-reference		
			mode-of-transport		
			place-of-departure		
			date-(& time)-of-departure		
			place-of-arrival		
			date-(& time)-of-arrival		
		T2	...		
		...			
		T5	...		
		A1	receptacle-no		

			A2	...		
			...			
			An	...		
			B1	container-number (& type)		
			B2	...		
			...			
			Bn	...		
	E2	...				
	...					
	E99					
C2	...					
...						
C999	...					

A.4 Tracking of aggregates – EVTRPT as a replacement for RESDES

To be completed.

A.5 Tracking of aggregates – EVTRPT as a replacement for RESCON

To be completed.

A.6 Tracking of aggregates – EVTRPT as a replacement for EXCEPT

To be completed.