



International Financial System Cloud Client Configuration Guide

version 4.50 and later

Last updated: 16 November 2023

Contact

Postal Technology Centre - Universal Postal Union Weltpoststrasse 4, 3015 Bern - Switzerland

Phone: +41 31 350 31 11

Service Desk Portal: <https://support.upu.int>



This document and the associated software contain proprietary information of the Universal Postal Union (UPU) and are provided under a specific agreement with eligible postal entities stipulating restrictions on use and disclosure. This document and the associated software are protected by law, including, as applicable, copyright laws.

This document and the associated software may not be, partly or as a whole, copied, disassembled, decompiled, modified or reverse-engineered without the express written permission from the UPU.

References in this publication to UPU products, applications, or services do not imply that the UPU intends to, or can make the said software, products, applications, or services, or parts thereof, available in all UPU member countries. Furthermore, no reference to a UPU software, product, application, or service is intended to state or imply that only UPU software, products, applications, or services may be used. Evaluation and verification of operation in conjunction with other products, applications, or services, except those expressly designated by the UPU, are the responsibility of the user.

Any references to particular designations of countries or territories shall not imply any endorsement or judgement by the UPU as to the legal status of such countries or territories, of their authorities and institutions or of the delimitation of their boundaries. Moreover, any references to names of specific companies or products (whether or not indicated as registered) shall not imply any intention to infringe proprietary rights, nor shall it be construed as an endorsement or recommendation on the part of the UPU.

The UPU shall not be liable for any loss or damage arising from, or directly or indirectly connected to, the use of, reference to, or reliance on the associated software or any other UPU product, application, or service, including, but not limited to, any liability arising from negligent misuse, errors, disclosure, undue transfer, loss or destruction of data that may occur.

Any trademarks mentioned or referred to in this document and the associated software are the property of their respective owners.

The information in this document, including uniform resource locators (URLs) and other website references, is subject to change without notice.

Nothing in or relating to this notice shall be deemed or interpreted as a waiver, express or implied, of the privileges and immunities enjoyed by the UPU as an intergovernmental organization and specialized agency of the United Nations.

Copyright © 1996-2023 Universal Postal Union. All rights reserved.

Table of contents

Prerequisites	4
Workstation requirements	4
Mobile device requirements	4
Install IFS Mobile	4
Install VMware Horizon Client	5
Accessing IFS Cloud	7
Access IFS Cloud from a workstation	7
Access IFS Mobile	8

Prerequisites

Before you can access IFS Cloud, your workstation or mobile device must already have the required components and must be enrolled.

! To enroll your workstation or mobile device, refer to the relevant enrollment documentation from this site: <https://enrollment.postnet.post/PTCEnrollmentDoc/>.

Workstation requirements

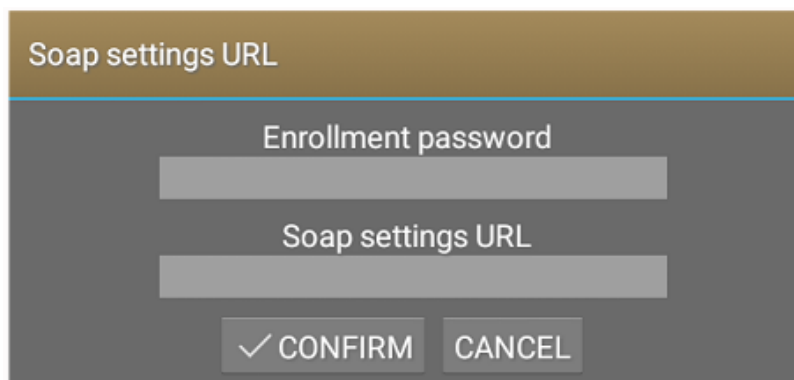
1. Install the **PTC Enroll Client** application and enroll your workstation by submitting a certificate request and downloading a valid certificate.
2. Ensure that your workstation has a compliant browser to access IFS Web.
3. If you are accessing the IFS Management Console, install the VMWare Horizon Client. See "[Install VMWare Horizon Client](#)" on the next page.

Mobile device requirements

1. Install **PTC Enroll Mobile** and enroll your mobile device by submitting a certificate request and downloading a valid certificate.
2. Install IFS Mobile to access IFS from your device.

Install IFS Mobile

1. Start your browser and navigate to the URL where the IFS Mobile app is published.
2. Download the IFS Mobile app file, `IFSMob.apk`, and tap **Install**.
2. When the installation process ends, you will be prompted to open the application. Tap **Open**. The **Soap settings URL** window is displayed.



3. Specify values for the following:

Enrollment password - Set a unique password for your device; this password is used to authorize installed PTC applications to access the certificate of the mobile device.


Soap settings URL - Go back to the browser window containing the published IFS Mobile files. Open `soap_settings.xml`, and copy the link to the file by selecting the address in

the browser address bar and holding until the copy option appears. Paste the link in the **Soap settings URL** field.

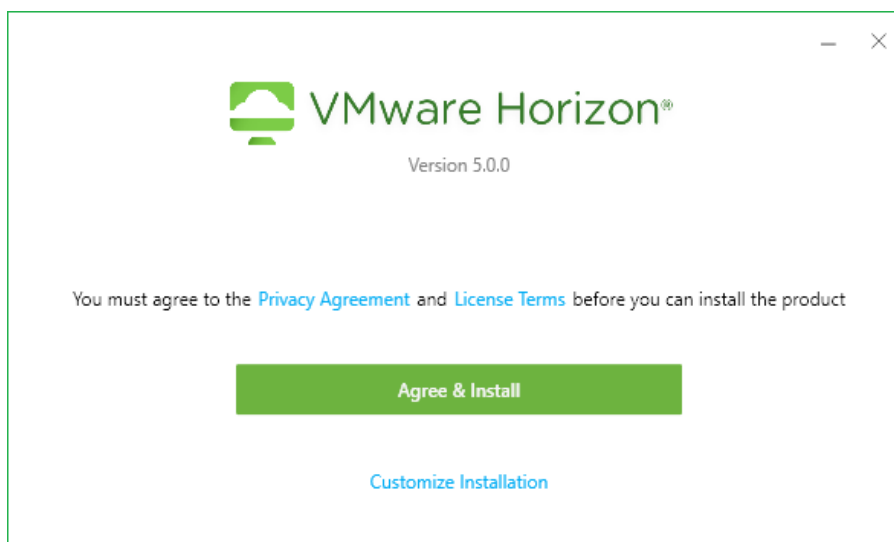
4. Tap **CONFIRM**.

Install VMware Horizon Client

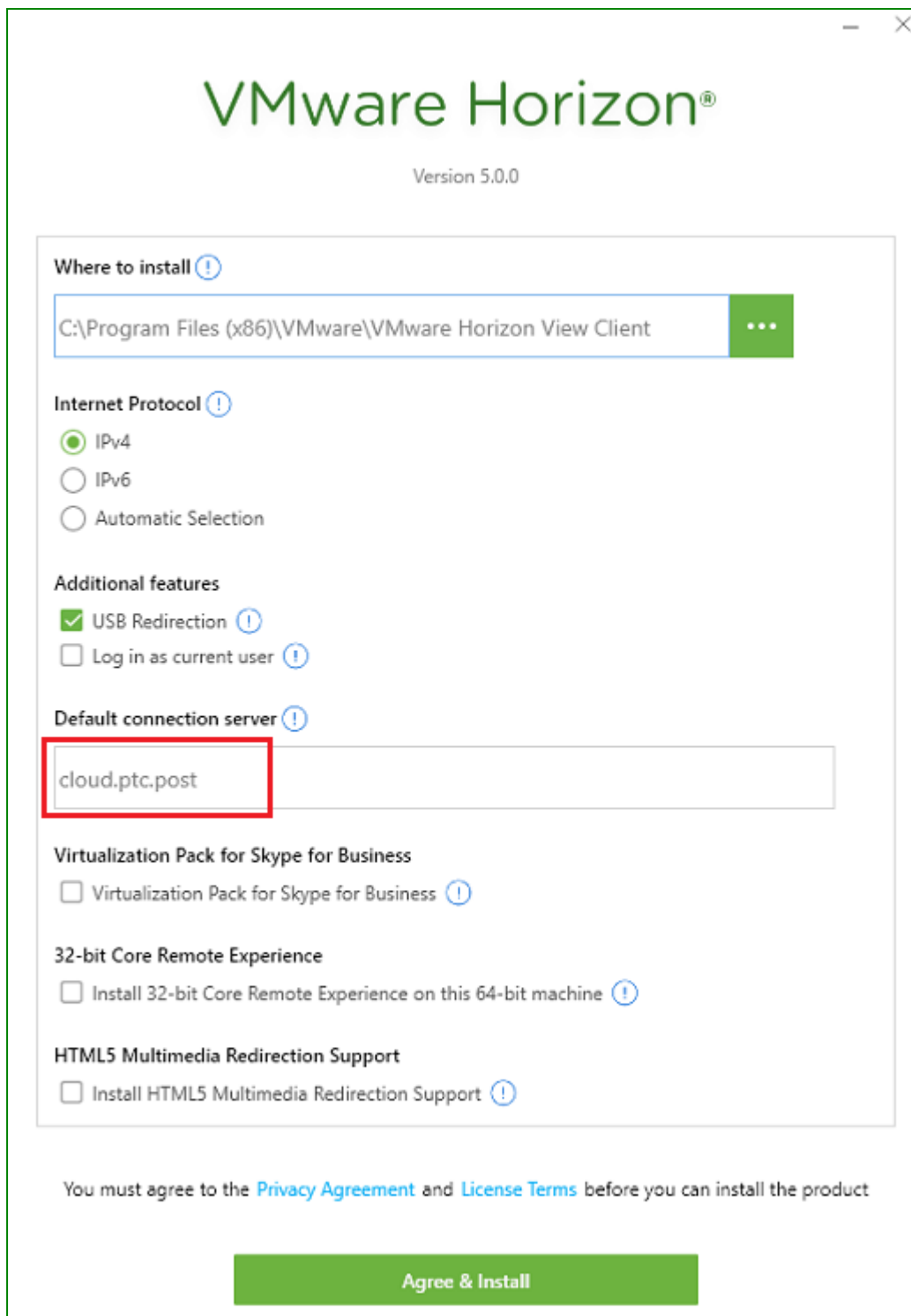
Install VMware Horizon Client only if you are accessing the IFS Management Console component from your workstation.

 The PTC recommends installing the latest version of VMware Horizon Client. The procedure below applies to VMware Horizon Client version 5.0.0.

1. Download and install the latest version of VMware Horizon Client from the following website: https://my.vmware.com/web/vmware/info/slug/desktop_end_user_computing/vmware_horizon_clients/5_0.
2. Click **Agree & Install** to install the application with default settings or click **Customize Installation**.
 - a. If you choose **Agree & Install**, skip steps 3 to 5.
 - b. If you choose **Customize Installation**, proceed to step 3.



3. If you choose **Customize Installation**, set the following values:
 - a. **Internet Protocol** - leave the default selection **IPv4** as is
 - b. **Additional features** - choose only **USB Redirection**
 - c. **Default connection server** - type **cloud.ptc.post** for the Production server, **cloud-test.ptc.post** for the Pre-Production server



4. Click **Agree & Install** to start the installation process.
5. Click **Launch** to launch the application.
6. Click **Finish** to complete the installation. You are prompted to restart your computer for the changes to take effect.

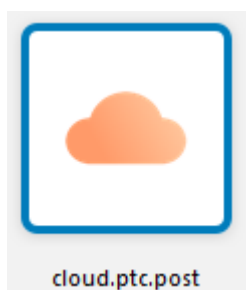
Accessing IFS Cloud

Access IFS Cloud from a workstation

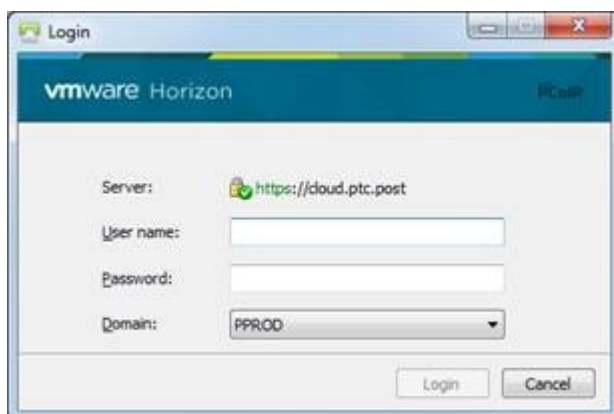
! You must have already enrolled your workstation before accessing IFS Management Console or IFS Web. See the [PCT Enroll Client User Guide](#), accessible at <https://enrollment.postnet.post/PTCEnrollmentDoc/> for details.

Access IFS Management Console

1. Start the VMware Horizon Client and double-click the server icon.



2. The application prompts you to log in. Enter the credentials below:
 - User name: XXX-UserName (where XXX is your operator code)
 - Password: your existing IFS Cloud password
 - Domain: **PPROD** for the test environment, **CLOUD** for the production environment



3. To perform administrative functions in IFS Cloud Management Console, double-click the icon below and enter your login credentials. IFS may request you to change your password if it is your first time to log in, or if your password does not comply with the password settings defined for your organization. You can change your password by logging in to IFS Web and selecting the **Change password** function from the **Administration and con-**

figuration menu.



Access IFS Web

1. Open your browser and enter the IFS Cloud URL provided to you by the PTC.
2. Log into IFS. IFS redirects you to the **Change password** screen if it is your first time to log in, or if your password does not comply with the password settings defined for your organization. You must change your password to access IFS.

Access IFS Mobile

 You must have already enrolled your mobile device to use IFS. See the [PTC Enroll Mobile User Guide](#), accessible at <https://enrollment.postnet.post/PTCEnrollmentDoc/> for details.

1. Open the IFS Mobile app on your mobile device.
2. Log into IFS. IFS prompts you to change your password if it is your first time to log in, or if your password does not comply with the password settings defined for your organization.