



UPU

UNION
POSTALE
UNIVERSELLE

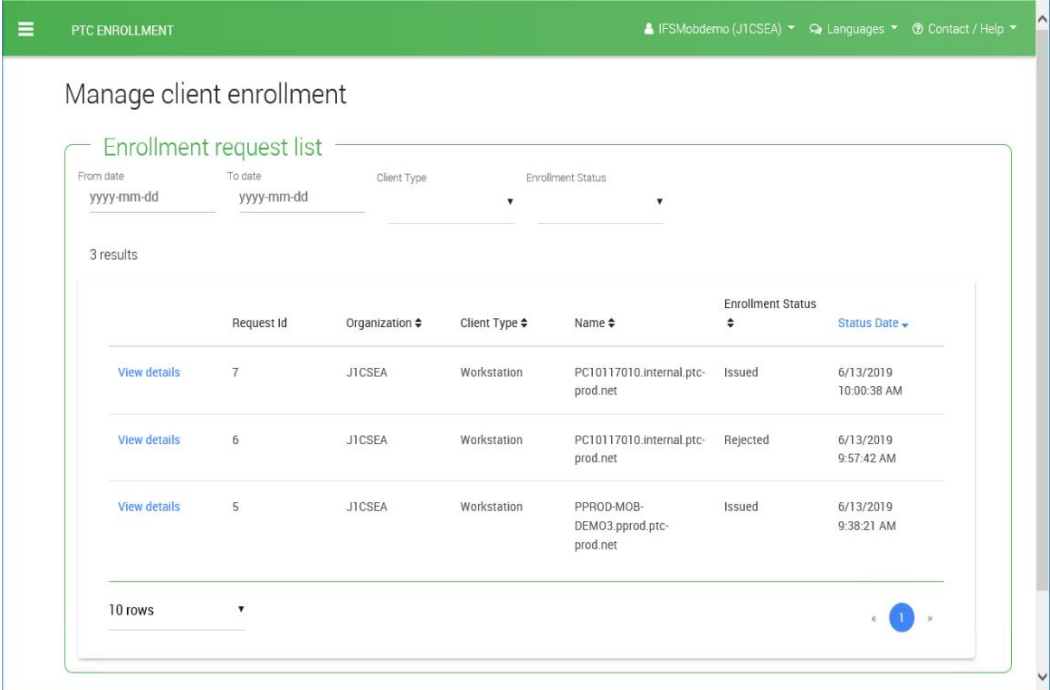
PTC Enrollment

December 2022

PTC Enrollment Overview

Purpose and requirements

- **Secure** Web site and API access to **authorized devices**
- Support **workstations, mobile** devices or **servers** as accessing devices
- **Built-in feature** in PTC product to ensure access restriction can be implemented without strong prerequisites on the local infrastructure
- Authorize devices management for **several PTC products**
- Deliver authorization from **DO management**



PTC ENROLLMENT

Manage client enrollment

Enrollment request list

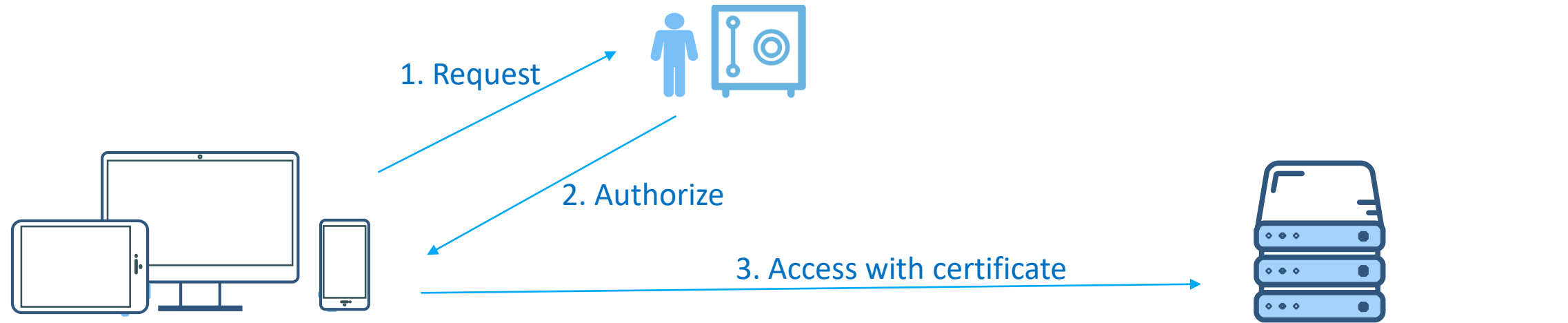
From date: yyyy-mm-dd To date: yyyy-mm-dd Client Type: Enrollment Status:

3 results

	Request Id	Organization	Client Type	Name	Enrollment Status	Status Date
View details	7	J1CSEA	Workstation	PC10117010.internal.ptc-prod.net	Issued	6/13/2019 10:00:38 AM
View details	6	J1CSEA	Workstation	PC10117010.internal.ptc-prod.net	Rejected	6/13/2019 9:57:42 AM
View details	5	J1CSEA	Workstation	PPROD-MOB-DEMO3.pprod.ptc-prod.net	Issued	6/13/2019 9:38:21 AM

10 rows

PTC Enrollment – Global process



Local devices

Workstation, Server, mobile devices

Accessing Web site, API
from PTC products (IFS,
UPU-IP, DPS)

Enrollment manager

PTC or DO staff

Authorize access in PTC
Enrollment solution to deliver
a certificate

PTC product Managed

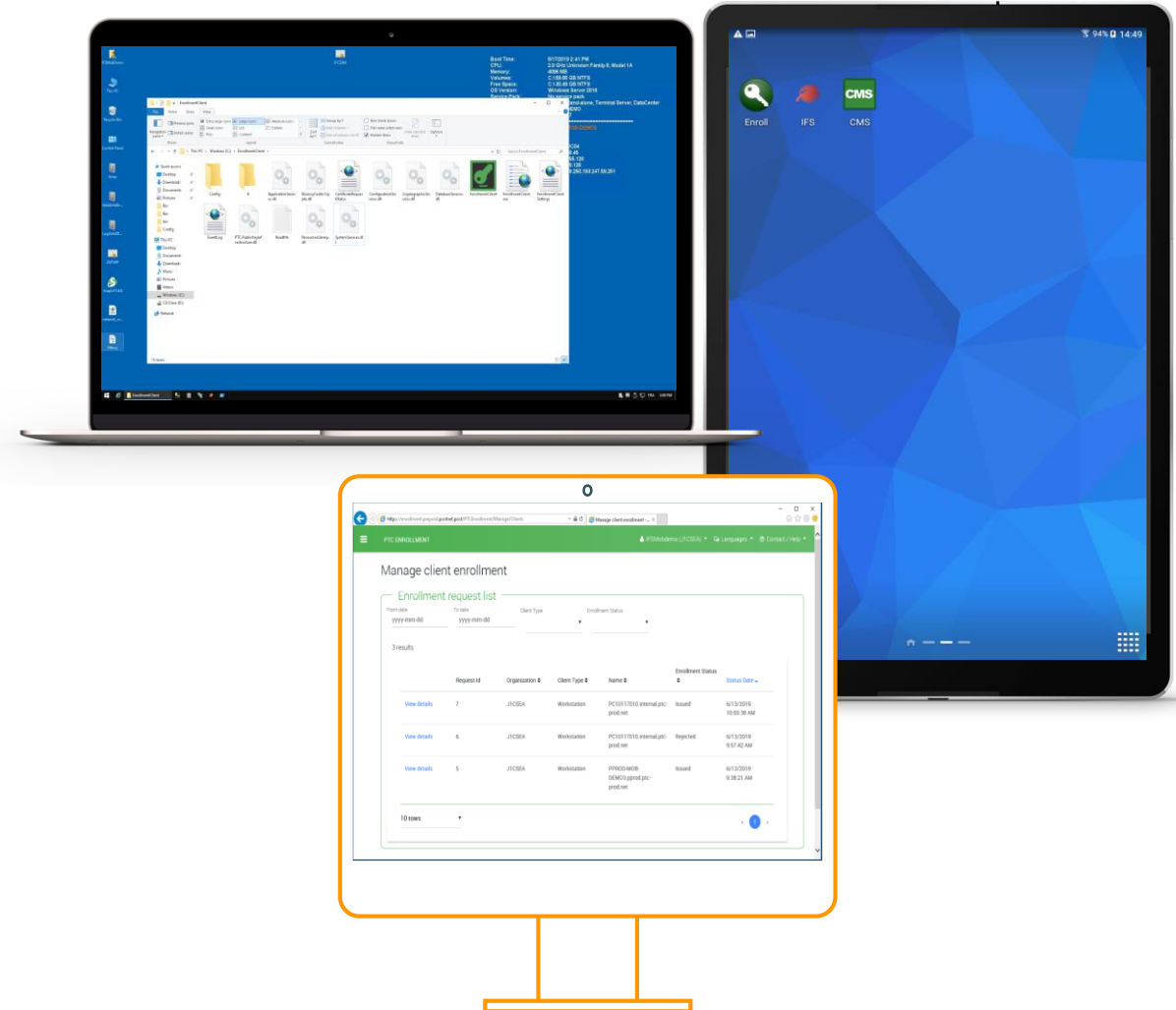
by DO or PTC

Web site, API with
restricted and controlled
access (IFS, UPU-IP, DPS)

PTC Enrollment – Systems suite

Full solution: systems suite for PTC Enrollment

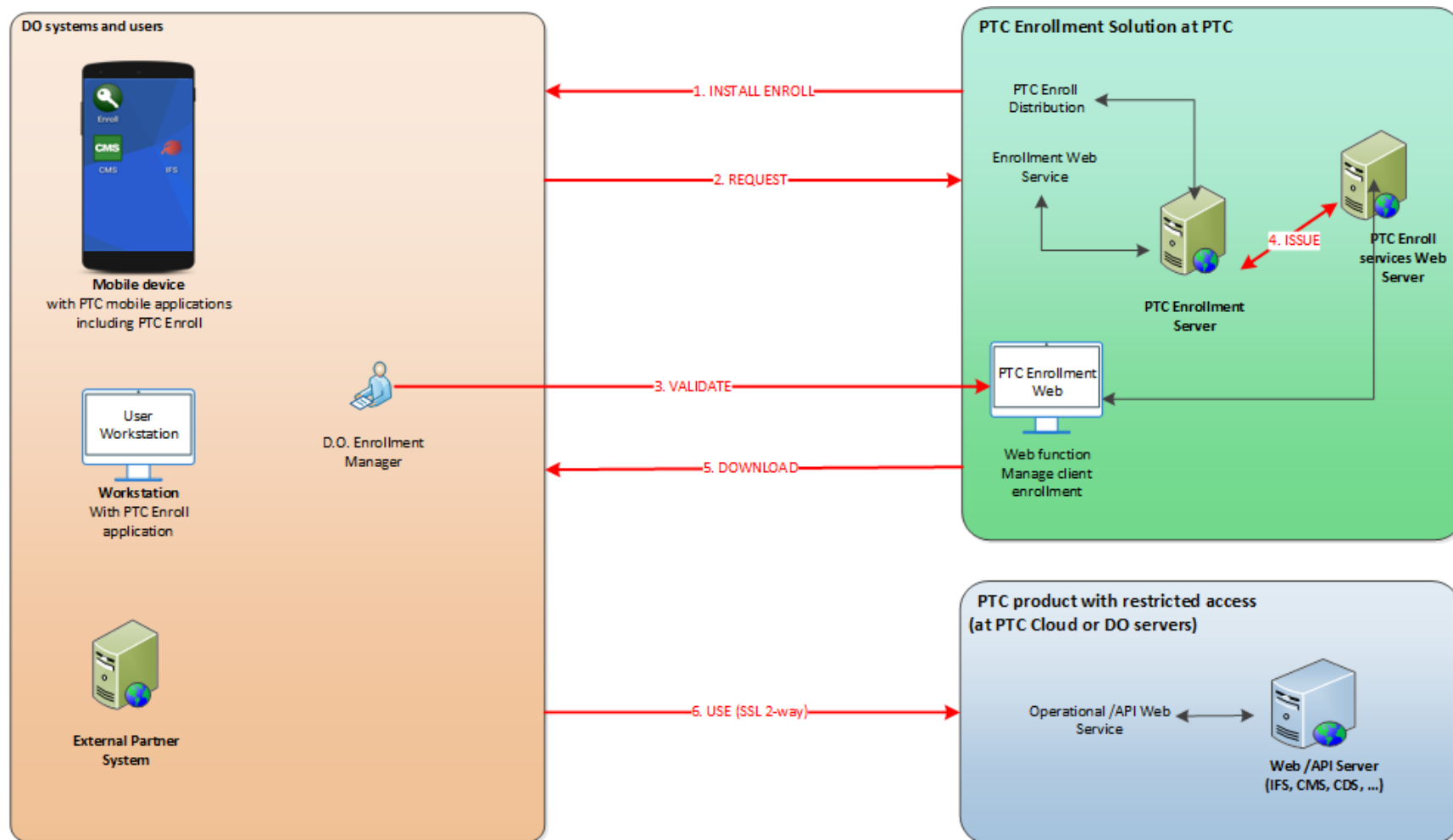
- **PTC Enroll Client:** workstation, server enrollment application and mobile Android application to request and maintain enrollment on device
- **PTC Enrollment:** Web site for DO Enrollment managers to manage and trace client enrollments
- **PTC Enrollment Background infrastructure:** set of Web services API and full PTC CA Infrastructure to distribute securely certificates and check certificate validity



Enrollment detailed process

PTC Enrollment – Detailed process

Implemented Solution



- 1. INSTALL PTC ENROLL** – User/Partner system downloads enrollment application from PTC Enrollment and installs it
- 2. REQUEST** – User/Partner system with PTC Enroll application for mobile or workstation sends certificate request for enrollment
- 3. VALIDATE** – D.O. Enrollment Manager validates and confirms the enrollment of the user/partner system in PTC Central Enrollment Web site
- 4. ISSUE** – On D.O. Enrollment Manager validation, PTC Enrollment Web service issues a certificate from PTC Certificate Authority Infrastructure
- 5. DOWNLOAD** – Certificate is available for user/partner, who downloads it thanks to PTC Enroll application for mobile or workstation
- 6. USE** – PTC mobile applications (IFS, CMS, etc) or Internet Browser on enrolled workstations use client certificate to securely access operational Web services

Thank You

Get in touch with us!