



# UPU CONSULTATIVE COMMITTEE

Facilitating sector-wide dialogue

The Consultative Committee (CC) of the Universal Postal Union (UPU) represents the interests of the wider postal sector stakeholders and provides a framework for effective dialogue between the UPU and the sector. The Consultative Committee (CC) meets once a year at the UPU headquarters in Berne at the same time as the Postal Operations Council (POC) and Council of Administration (CA) meetings.

[WWW.UPU.INT](http://WWW.UPU.INT)

## THE UPU CONSULTATIVE COMMITTEE MEMBERS INCLUDE:

### PRIVATE SECTOR ENTITIES

Manufacturers and suppliers of goods and services to the postal services sector

Multinational/national companies specializing in e-commerce, retail, return logistics, payment solutions, Internet and technology

Transport and logistics providers

### NON-GOVERNMENTAL ORGANIZATIONS

Representing customers, delivery service providers, postal employees or postal employers

Philanthropic entities

Standardization, financial and development organizations

### HIGH-LEVEL FIGURES FROM THE POSTAL SECTOR

### ACADEMIA

Universities and research institutes

## WHAT ARE THE BENEFITS OF A CONSULTATIVE COMMITTEE (CC) MEMBERSHIP ?

Effective collaboration between all stakeholders helps make the postal sector more resilient, sustainable, coordinated, relevant, inclusive, agile and responsive to new challenges and opportunities.




**By joining the UPU CC, private sector players gain:**

Better insight into and global overview of the current research, policy and regulatory work

Visibility and networking opportunities across the postal ecosystem

Opportunity to directly contribute to the UPU's mission

### Membership status & rights

- |  |  |  |  |
|--|---|---|--|
| Attend CC GA meetings                                  | ✓   | ✓   | ✓  |
| Attend CA/POC plenary meetings*                        | ✓   | ✓   | ✓  |
| Access UPU docs, publications and databases**          | ✓   |   |  |
| Eligible for CC sub rapporteur/sub theme               | ✓   |   |  |
| Eligible for CC chapter rapporteur                     | ✓   | ✓   | ✓  |
| Eligible to sponsor coffee breaks during UPU meetings  | ✓   |   |  |
| Eligible to sponsor POC/CA lunch or evening receptions | ✓   | ✓   |  |
| Eligible to sponsor Congress events & receptions       | ✓   |   |  |
| Eligible to sponsor external UPU events & receptions   | ✓   |   |  |

\*observer \*\*to be defined by the CA and POC

Depending on the membership category – **Gold, Silver or Bronze** – members gain access to the UPU proceedings, events, documentation, databases, and networks.

## UPU CONSULTATIVE COMMITTEE APPLICATION PROCESS FOR NEW MEMBERS:

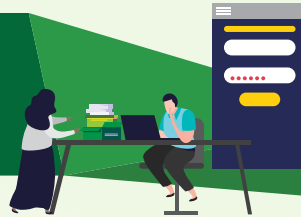
ACCESS THE MEMBERSHIP APPLICATION  
FORM ON THE UPU WEBSITE



FILL IN THE FORM STATING YOUR  
INTEREST IN JOINING THE COMMITTEE



OBTAIN A WRITTEN AUTHORIZATION OR  
RECOMMENDATION FROM THE RESPONSIBLE  
AUTHORITY (ministry or postal regulator)  
IN YOUR COUNTRY



SUBMIT THE DULY COMPLETED AND SIGNED  
MEMBERSHIP APPLICATION FORM WITH YOUR  
WRITTEN AUTHORIZATION, TO THE CONSULTATIVE  
COMMITTEE SECRETARIAT BY POST OR EMAIL



GET YOUR APPLICATION  
APPROVED AND JOIN THE UPU



**7** THEMATIC CHAPTERS  
OF THE NEW UPU  
CONSULTATIVE  
COMMITTEE INCLUDE:

**1**

**POLICY AND REGULATIONS**

**FREIGHT AND TRANSPORT**

**2**

**3**

**CUSTOMS AND PRODUCT SECURITY**

**ADDRESSING AND DIRECT MARKETING**

**4**

**5**

**E-COMMERCE**

**POSTAL FINANCIAL SERVICES**

**6**

**7**

**SUSTAINABILITY**

## Members of the UPU Consultative Committee



**JOIN #OPENUPU** | Become a member of the  
Consultative Committee today





"Digitalization facilitates partnerships. Even the largest companies and Posts cannot do it by themselves. The new UPU Consultative Committee structure is about direct communication and dialogue, but also about interconnectivity and integration of private partners and their solutions into the existing global IT backbone of the UPU. It is about shaping the digital future of the sector together."

Walter Trezek, *Chair of the UPU Consultative Committee*



"Joining the UPU Consultative Committee provides a unique opportunity for private sector entities to engage with the postal sector towards building a sustainable and inclusive postal ecosystem. Monthly webinars, networking events, and workshops with regional postal unions offer invaluable partnership opportunities for members. Contributing to thematic chapters provides an excellent opportunity to voice your perspective regarding standards, policies and tools that could facilitate mutual growth. As a Gold member, I have personally leveraged these benefits and I welcome you to join this unique group."

Santosh Gopal, *CEO of Ship2MyID, Vice-Chair of the UPU Consultative Committee*

Since its transformation, the UPU Consultative Committee (CC) has grown exponentially due to its integration of wider postal stakeholders, who have become CC members.

Today, the CC members account for approximately 70 % of global cross-border e-commerce volumes. This establishes the UPU CC as a key player in the global e-commerce ecosystem, placing the UPU in the position to become a global unifier of networks and solutions. The UPU CC Secretariat is here to serve you, and aims to nurture our common goals and interests to strengthen the UPU global postal network.

For any queries, please contact [cc@upu.int](mailto:cc@upu.int)

FOR MORE  
INFORMATION ON  
BECOMING A MEMBER



**JOIN #OPENUPU** | Become a member of the  
Consultative Committee today