

Charting the future of inclusive e-commerce

(UPU perspective)

UPU WLF

17 October 2022

The state of ecommerce

As restrictions are lifted B2C supplies turn to their pre-pandemic trend

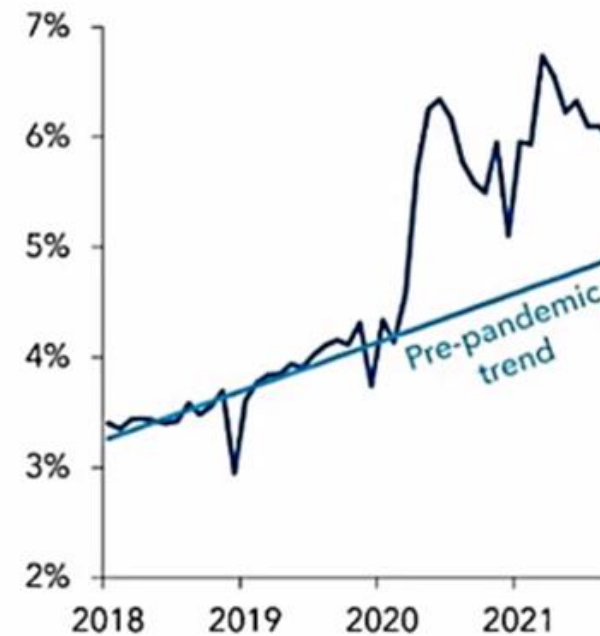
Online retail

The share of retail done online is settling back in line with pre-pandemic trends across various economies.

United States, retail online share



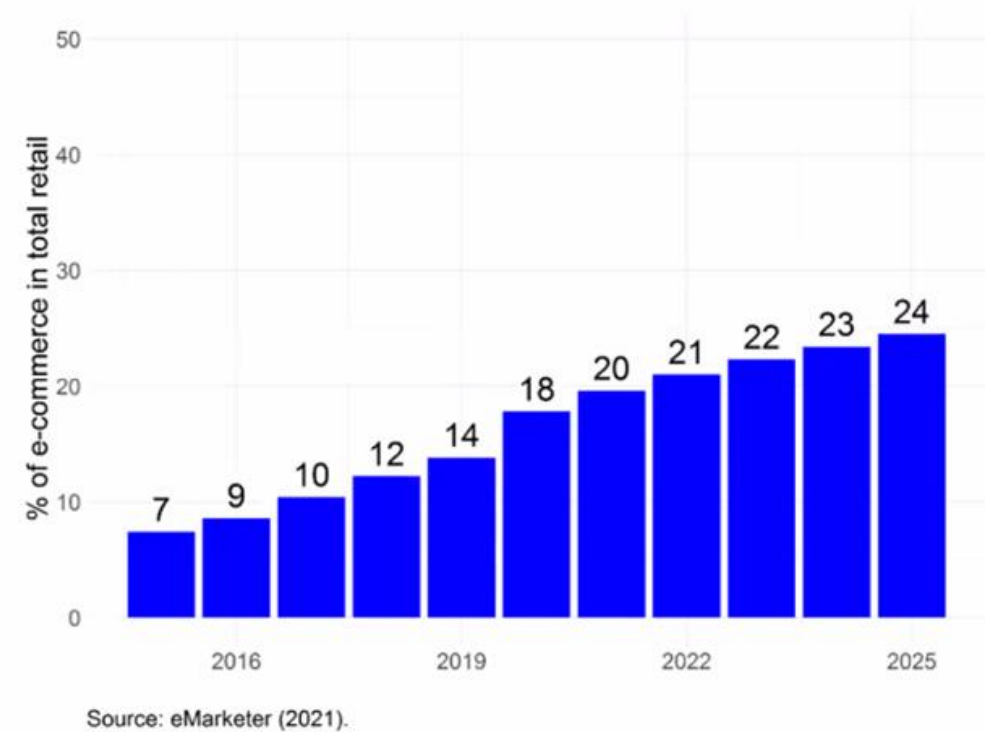
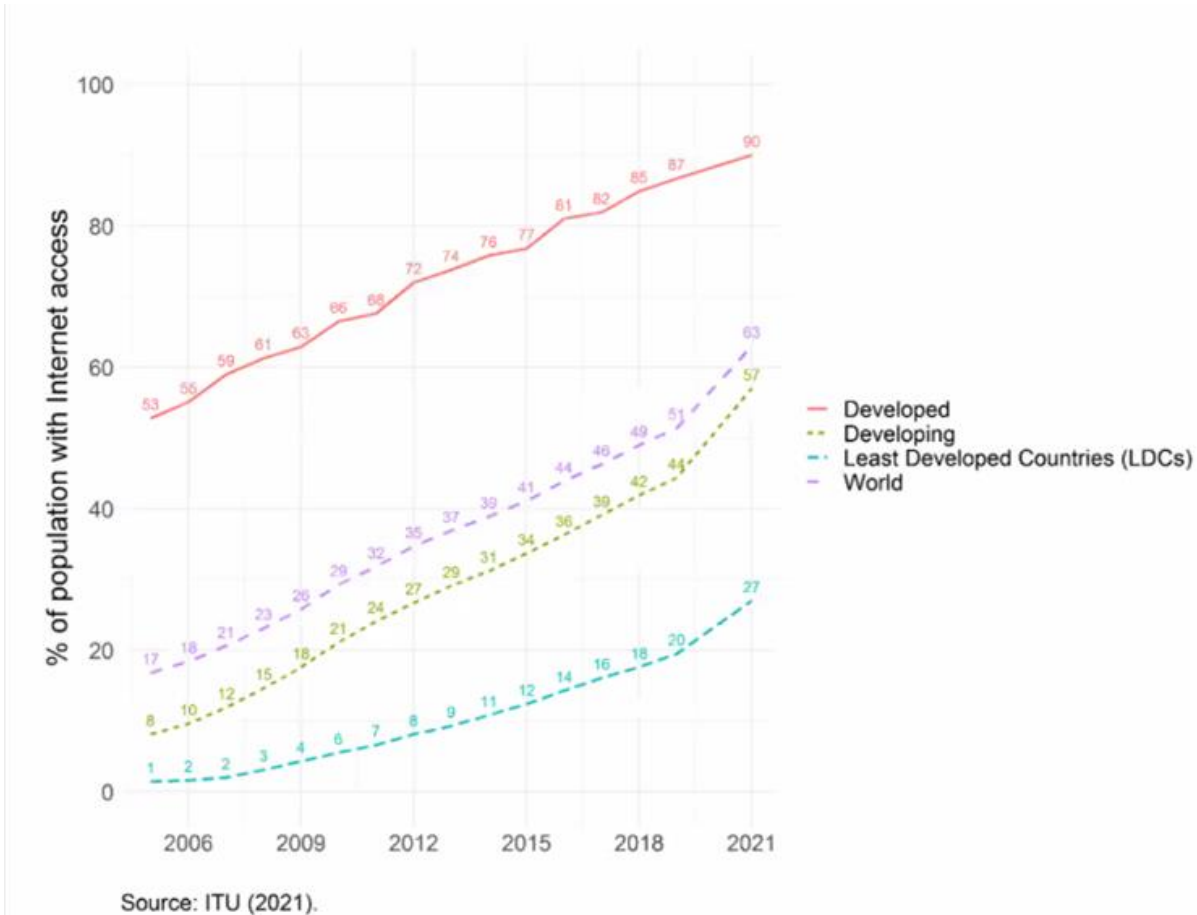
Brazil, retail online share



Source: Mastercard Economics Institute.

The state of ecommerce

More consumers than ever online (mobile!) – digital retail is further growing



Future of Ecommerce – a perfect STORM is gathering

Fuel price / Food shortage / Financial crisis / disposal Income of consumers*

- **90% of all ecommerce deliveries are made by 10% of CEP operators**
- **> 75% of retail items are managed via interconnected transcontinental supply chain infrastructure**
- **Tracked volumes in the end-to-end Universal Postal Union (UPU) network have fallen by +50% (even 75% into EU) over the past 2 years – switch to B2B2C (incl. direct injection in country of destination)**
- **The majority of B2C supplies are delivered using harmonized electronic data exchanged in advance (EAD). Data follows the UPU-WCO Global Postal Model and complements customs, import duties, transport security and product safety regulations worldwide**
- **Pre-lodging electronic documents at item level allows forward harmonization of data for all freight and transport modes (incl. DDU / DDP) – next level of digitalization will cover all freight & transport modes**
- **Sustainable packaging and the globally harmonized measuring, accounting, and reporting of CO² and GHG emissions will be achieved using data which is already available**
- ***resulting in Germany -7%, or in Austria -5% in Q2 / 2022, compared to 2021**



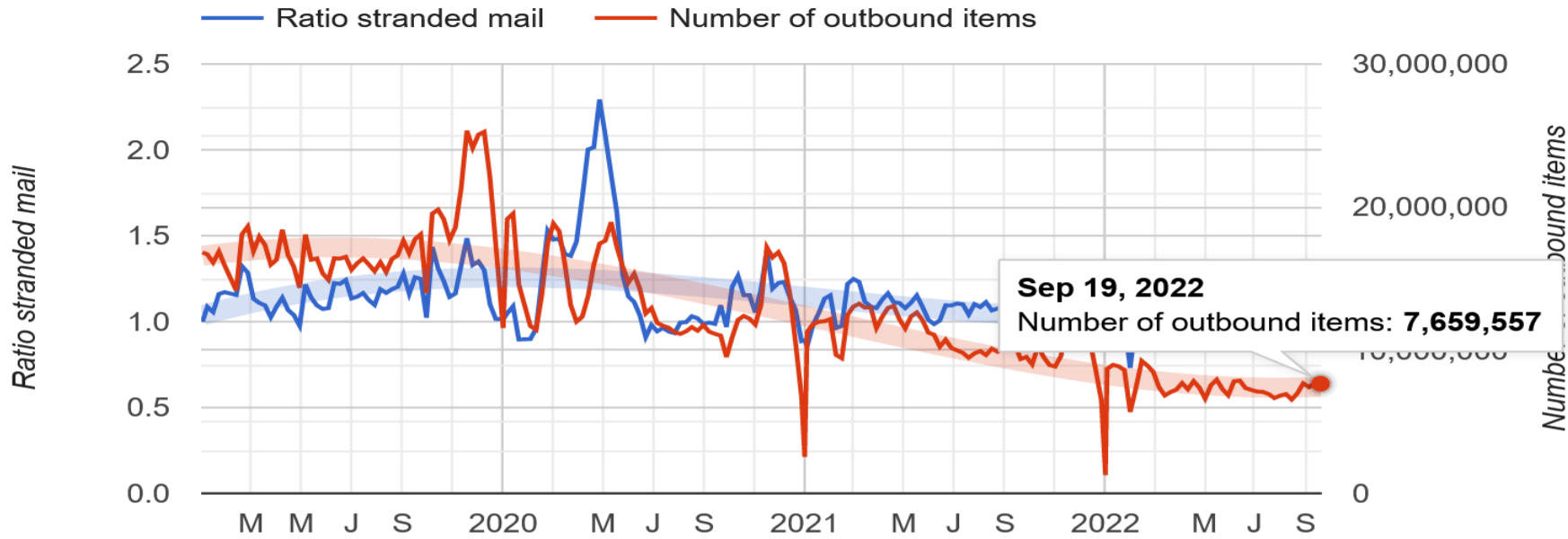
Data an

Observat
Data ana
This repo



total
1683626
1669826
1612817
1689808
1592703
7846097
1417709
1809605
18639455
16921069
17938479
17351941

Data analytics: Stranded mail



As observed on the UPU's Postal IT network, Post*NET, the impact on the Covid-19 pandemic on the UPU global postal supply chain is twofold. [Blue graphs] Due to cancellation and delays in UPU postal transport networks, the ratio of outbound to inbound weekly mail, compared to the same weekly period in 2019, increased from mid-February 2020. This indicates stranded mail in the postal supply chain. [Red graphs] The UPU designated operators are currently sending less outbound international mail.

Source data: UPU EMS, Letter and Parcels (barcoded) postal items.

Item ID	Date	Operator	Year	Count
18639455	2019-02-25	EMC	2019	9
16921069	2019-03-04	EMC	2019	10
17938479	2019-03-11	EMC	2019	11
17351941	2019-03-18	EMC	2019	12



UPU CC

Wider Postal Sector Players



JOIN #OPENUPU

Become a member of the
Consultative Committee today



JOIN #OPENUPU

Become a member of the Consultative Committee today

1. Key CC changes approved by 27th Congress

1

As of 1st July 2022, private companies are welcome to apply for the membership of the Consultative Committee (CC) and DOs are accepted as observers

2

Postal stakeholders that are not public postal operators or regulators can add their voice to the UPU's deliberations through the CC)

3

The Committee represents the interests of the wider postal sector and provides a framework for effective dialogue between CC-POC-CA and Congress.



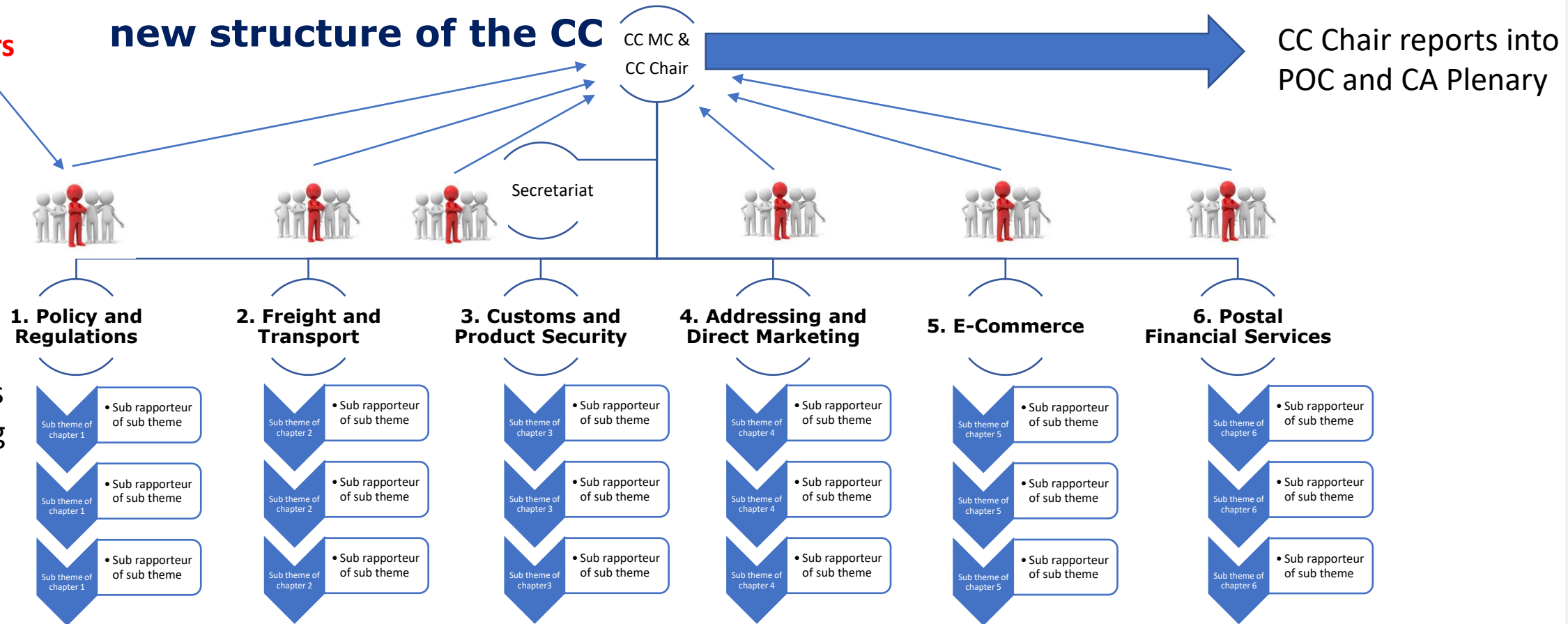
2. New approved CC structure

Thematic chapters and sub thematic chapters complementing the new structure of the CC

Chapter Rapporteurs



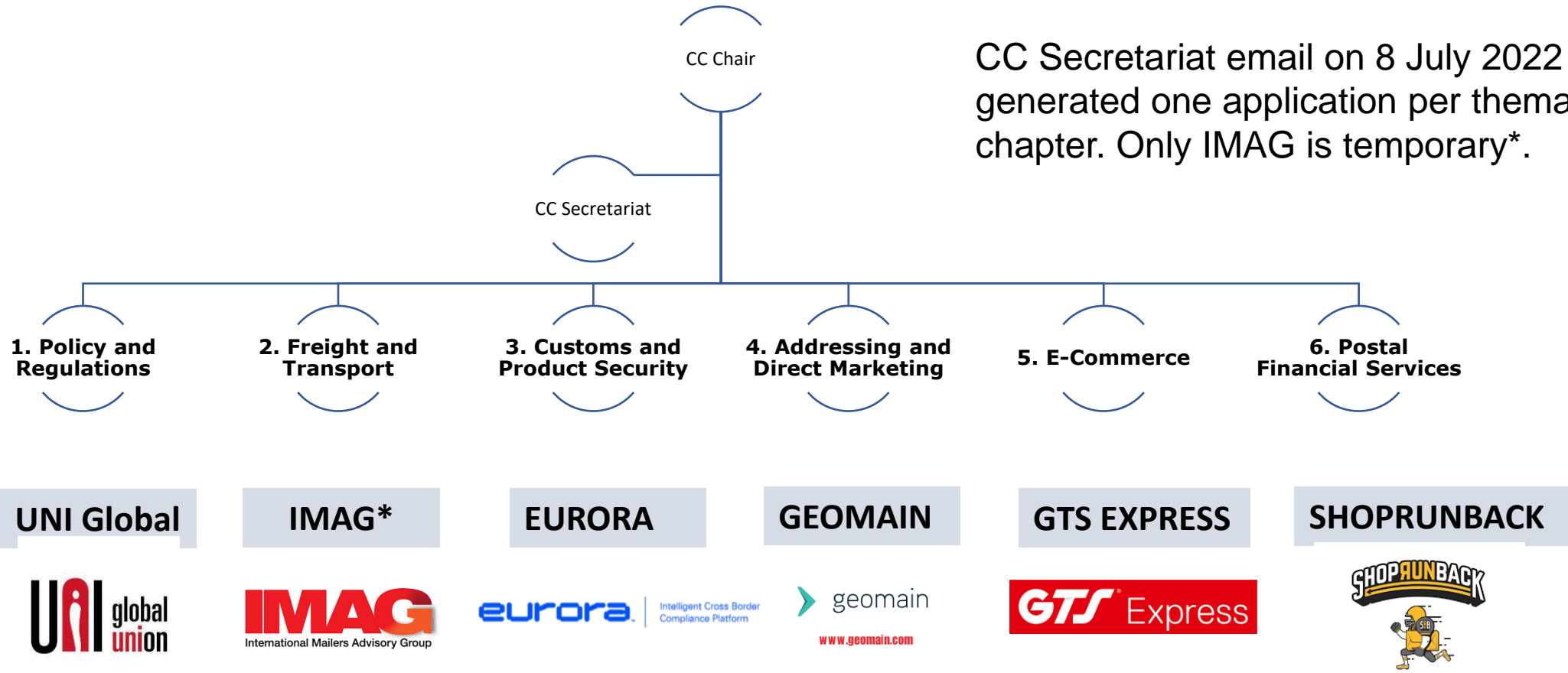
Provide input to POC/CA Committees and working groups





Election of CC rapporteurs for the thematic chapters

Call for applications of Thematic Chapters Rapporteurs of the new structure of the CC



UNI Global

IMAG*

EURORA

GEOMAIN

GTS EXPRESS

SHOPRUNBACK



Thank you for your interest!

walter.trezek@commerce-logistics.com
