

# SMART SCREENING

---

AUTOMATION OF PUBLIC HEALTH  
SCREENING CAMPAIGNS



### Smart Screening

The dedicated solution for **health authorities** to run effective campaigns encouraging citizens to participate in preventative health.

programmes

Screening:

- ✓ **Cytology**
- ✓ **Mammography**
- ✓ **Colonoscopy**

✓ **Increases participation in the programme**

✓ **Increases the number of reliable tests**

✓ **Automates the entire process, from invitation to sample acceptance**

# SMART SCREENING

## DESCRIPTION OF THE SOLUTIONS

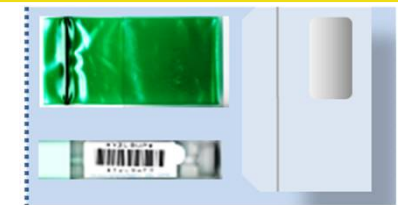
Smart Screening



*Invitation*



*Invitation with kit for self-sampling*



*RFID self-sampling kit to automate the process*

**Patented**



Multifunctional gate to automate sample acceptance

# SMART SCREENING

## HOW IT WORKS: BASIC SERVICE

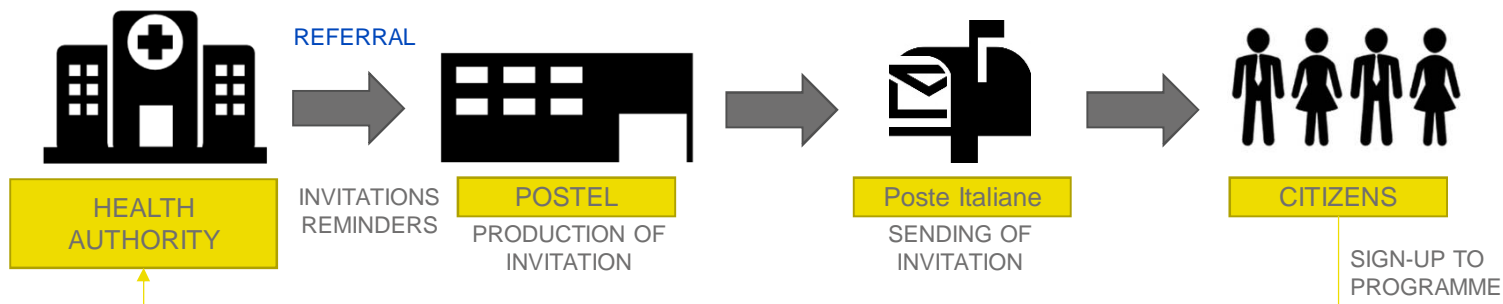


### Invitation



#### Contents:

- ✓ invitation letter with high-impact message
- ✓ information brochure
- ✓ instructions for participation



# SMART SCREENING

## PERSONALIZED SERVICES: SELF-SAMPLING KIT



### Invitation with kit for self-sampling



#### Contents:

- ✓ invitation letter with high-impact message
- ✓ information brochure
- ✓ instructions for participation
- ✓ sample vials
- ✓ envelopes with tube holder



HEALTH  
AUTHORITY

REFERRAL

INVITATIONS  
Self-sampling kit  
REMINDERS



POSTEL

PRODUCTION OF  
INVITATION AND KIT



Poste Italiane

SENDING OF  
INVITATION/KIT



CITIZENS

COLLECTION/  
SENDING-BACK-OF  
KIT

SIGN-UP TO  
PROGRAMME



HEALTH  
AUTHORITY/  
PHARMACY



# SMART SCREENING

## SELF-SAMPLING KIT: PROCESS



### *Invitation with kit for self-sampling*



- ✓ The samples, placed in the return envelope, are delivered to the pharmacy or sent to the health authority's testing laboratory
- ✓ The collection centre manually checks that the name on the return envelope matches the name on the sample vial
- ✓ Each vial is catalogued in the management system by means of a barcode reader



# SMART SCREENING

## PERSONALIZED SERVICES: PATENTED RFID KIT FOR SELF-SAMPLING



### Invitation with RFID kit for self-sampling

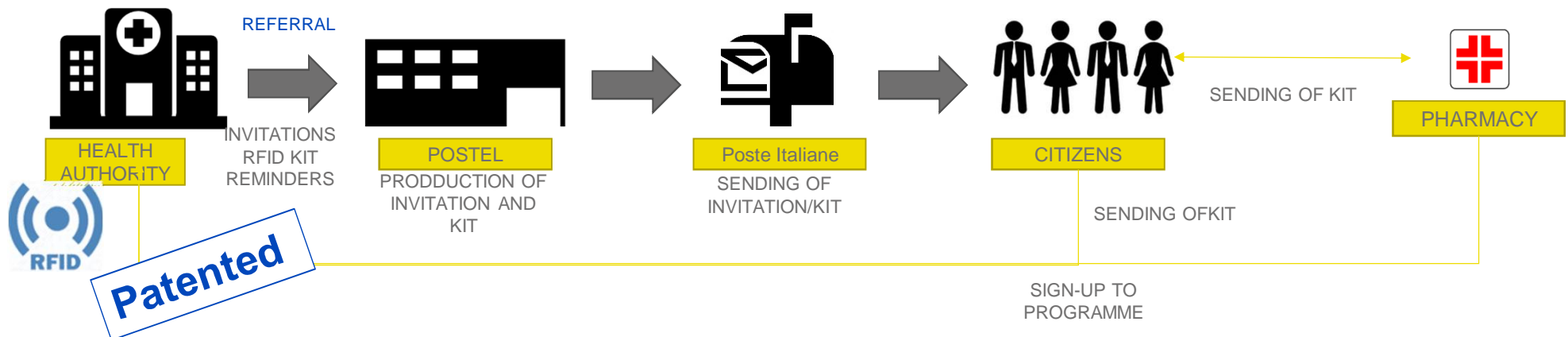


Contents:

- ✓ invitation letter with high-impact message
- ✓ information brochure
- ✓ instructions for participation
- ✓ sample vials
- ✓ return envelopes with RFID link to the vial
- ✓ automatic checking at collection centres
- ✓ time & temperature checking (experimental)



Patented



# SMART SCREENING

## RFID KIT FOR SELF-SAMPLING: PATENTED PROCESS



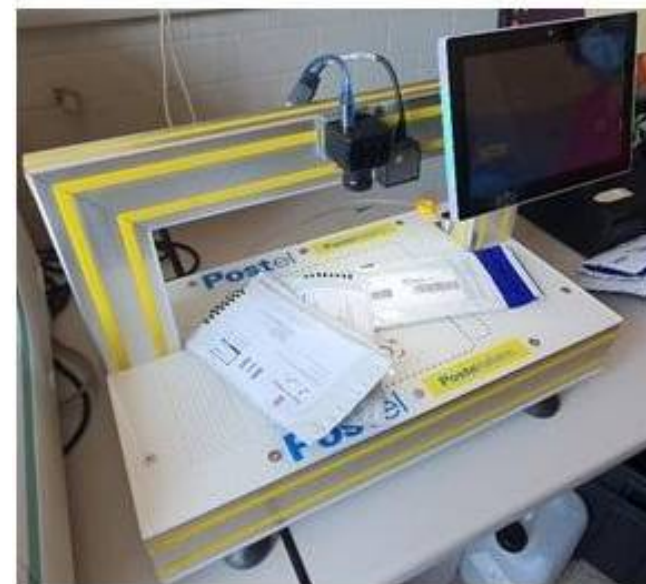
### *Invitation with RFID kit for self-sampling*



- ✓ The samples, inserted in the return envelope, are delivered to the pharmacy or sent to the health authority's laboratory for analysis.
- ✓ Thanks to an RFID smart label reading gate, checking of correct match and uploading of data to the management system is **completely automatic**.



Patented process





# SMART SCREENING

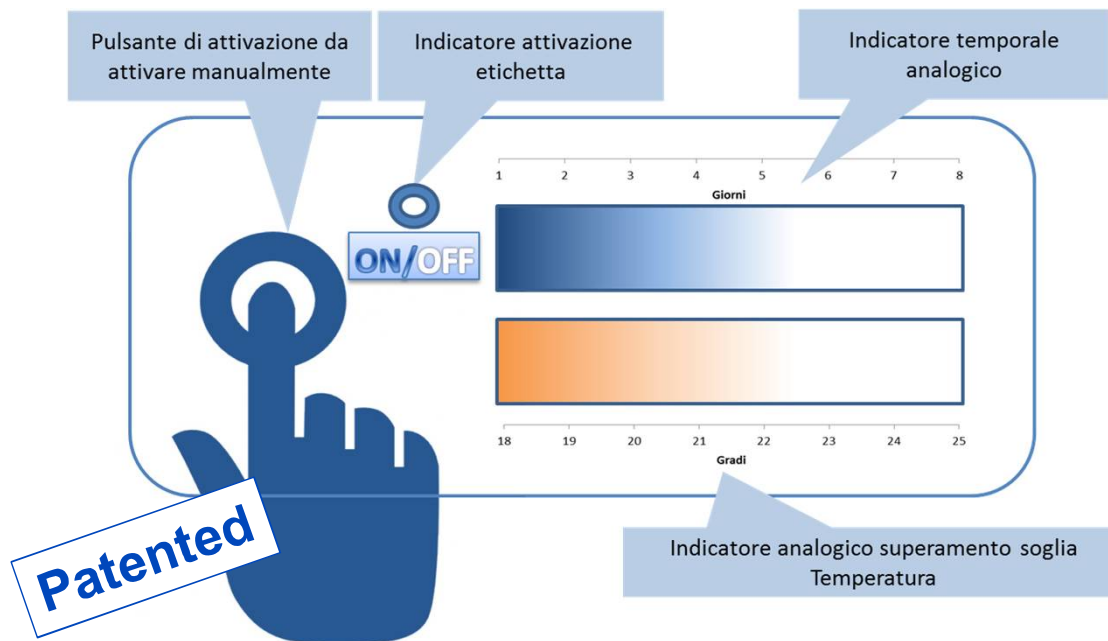
## TIME AND TEMPERATURE TRACKING

### *Invitation with RFID kit Time and temperature*



With the “time & temperature” smart labels you can measure:

- how much time has passed since the sample was taken
- whether temperature limits have been exceeded
- the **overall reliability** of the sample



# SMART SCREENING

## MULTIFUNCTIONAL ACCEPTANCE GATE



- At the health authority's laboratories, a multifunctional gate is installed for automated, bulk processing of returned samples.
- The gate is equipped with various types of readers (RFID, NFC, barcode, smart label, photo).
- Thanks to the integrated tablet, the station is totally autonomous. Data can be saved to a memory card or, thanks to the LAN connection, downloaded directly to the health authority's systems.

**Complete automation of acceptance, verification and logging in the system.  
Faster and error-free.**



### Increased reliability of programme results

Correct envelope insertion and envelope-tube matching thanks to **RFID**

Sample reliability guaranteed by **time & temperature** smart labels

**Integrated alert systems** for immediate checking of contaminated samples



### High automation of health authority processes

Kits prepared and dispatched entirely by Postel

Mass processing of return samples through multifunctional gates

Automatic uploading of data in the management system during check-in

Time saving of more than 60% for check-in and data entry



### One-of-a-kind solution

The Postel System is a unique, patented screening solution

Maximum guarantee for results of screening programmes

Positive impact in terms of brand image as well as digitalization and innovation

# SMART SCREENING

CASE HISTORY POSTEL: UMBRIA REGION

## Invitations for smart screening: colorectal and breast cancer and HPV



Invio lettera di invito per gli screening:  
-Mammella;  
-Cervice uterina;  
-Colon retto.



(Invio lettera di sollecito in caso di mancata adesione)



Ricezione dei campioni ed esecuzione dei test, approfondimenti diagnostici, esecuzione dei trattamenti.

ESITO NEGATIVO



Invio lettera con esito negativo

ESITO POSITIVO



Es: screening Colonretto



Informazione operatori e pazienti



Esecuzione del test II° livello (entro 3 mesi)



Invio lettera con esito (se negativo) o invito a presentarsi presso la ASL (se positivo).

### Contents of package

- C5 envelope
- A4 sheet (invitation and/or self-sampling instructions)
- A4 flyer A4 (screening information)
- Vial (self-sampling bottle, provided by health authority)
- Plastic envelope with snap closure
- LDPE return envelope, tearproof, waterproof, leakproof, according to the requirements of the Min. of Health (Circ. n. 3 of 8/5/2003), with a sheet of protective paper



UPU

UNIVERSAL  
POSTAL  
UNION

## Décision attendue

Commenter et prendre  
note

CEP C 3 FDMD 2021.1–Pres 4

## Decision expected

Provide comments and take  
note

POC C 3 DMAB 2021.1–Pres 4





POST HEALTH